

# Phospho-Raf1-S621 Rabbit mAb

Catalog No.: AP1011 **Recombinant**

## Basic Information

**Observed MW**

73kDa

**Calculated MW**

73kDa

**Category**

Primary antibody

**Applications**

ELISA,WB

**Cross-Reactivity**

Human, Rat

**CloneNo number**

ARC1556

## Background

This gene is the cellular homolog of viral raf gene (v-raf). The encoded protein is a MAP kinase kinase kinase (MAP3K), which functions downstream of the Ras family of membrane associated GTPases to which it binds directly. Once activated, the cellular RAF1 protein can phosphorylate to activate the dual specificity protein kinases MEK1 and MEK2, which in turn phosphorylate to activate the serine/threonine specific protein kinases, ERK1 and ERK2. Activated ERKs are pleiotropic effectors of cell physiology and play an important role in the control of gene expression involved in the cell division cycle, apoptosis, cell differentiation and cell migration. Mutations in this gene are associated with Noonan syndrome 5 and LEOPARD syndrome 2.

## Recommended Dilutions

**WB** 1:500 - 1:1000

## Immunogen Information

**Gene ID**

5894

**Swiss Prot**

P04049

**Immunogen**

A synthetic phosphorylated peptide around S621 of human Phospho-Raf1-S621 (P04049).

**Synonyms**

NS5; CRAF; Raf-1; c-Raf; CMD1NN; Phospho-Raf1-S621

## Contact

 | 400-999-6126 | [cn.market@abclonal.com.cn](mailto:cn.market@abclonal.com.cn) | [www.abclonal.com.cn](http://www.abclonal.com.cn)

## Product Information

**Source**

Rabbit

**Isotype**

IgG

**Purification**

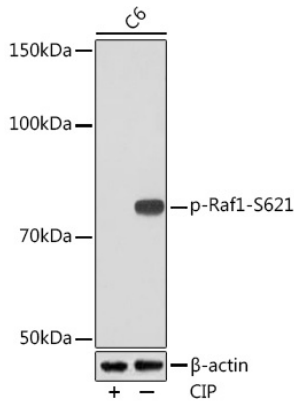
Affinity purification

**Storage**

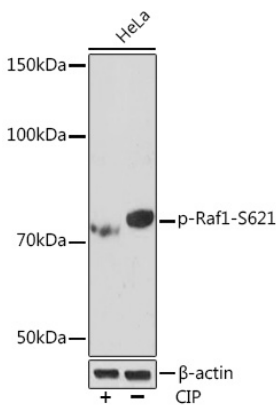
Store at -20°C. Avoid freeze / thaw cycles.

Buffer: PBS with 0.02% sodium azide,0.05% BSA,50% glycerol,pH7.3.

## Validation Data



Western blot analysis of extracts of C6 cells, using Phospho-Raf1-S621 Rabbit mAb (AP1011) at 1:1000 dilution. C6 cells were treated by CIP(20uL/400ul) at 37°C for 1 hour.  
Secondary antibody: HRP Goat Anti-Rabbit IgG (H+L) (AS014) at 1:10000 dilution.  
Lysates/proteins: 25µg per lane.  
Blocking buffer: 3% BSA.  
Detection: ECL Basic Kit (RM00020).  
Exposure time: 3min.



Western blot analysis of extracts of HeLa cells, using Phospho-Raf1-S621 Rabbit mAb (AP1011) at 1:1000 dilution. HeLa cells were treated by CIP(20uL/400ul) at 37°C for 1 hour.  
Secondary antibody: HRP Goat Anti-Rabbit IgG (H+L) (AS014) at 1:10000 dilution.  
Lysates/proteins: 25µg per lane.  
Blocking buffer: 3% BSA.  
Detection: ECL Enhanced Kit (RM00021).  
Exposure time: 3min.