

# Phospho-Smad5-S463/S465 Rabbit mAb

Catalog No.: AP1023 **Recombinant**

## Basic Information

### Observed MW

52kDa

### Calculated MW

52kDa

### Category

Primary antibody

### Applications

ELISA, WB

### Cross-Reactivity

Human

### CloneNo number

ARC1568

## Background

The protein encoded by this gene is involved in the transforming growth factor beta signaling pathway that results in an inhibition of the proliferation of hematopoietic progenitor cells. The encoded protein is activated by bone morphogenetic proteins type 1 receptor kinase, and may be involved in cancer. Alternative splicing results in multiple transcript variants.

## Recommended Dilutions

**WB** 1:500 - 1:1000

## Immunogen Information

### Gene ID

4090

### Swiss Prot

Q99717

### Immunogen

A synthetic phosphorylated peptide around S463 & S465 of human Smad5 (Q99717).

### Synonyms

DWFC; JV5-1; MADH5; Phospho-Smad5-S463/S465

## Contact

☎ | 400-999-6126

✉ | [cn.market@abclonal.com.cn](mailto:cn.market@abclonal.com.cn)

🌐 | [www.abclonal.com.cn](http://www.abclonal.com.cn)

## Product Information

### Source

Rabbit

### Isotype

IgG

### Purification

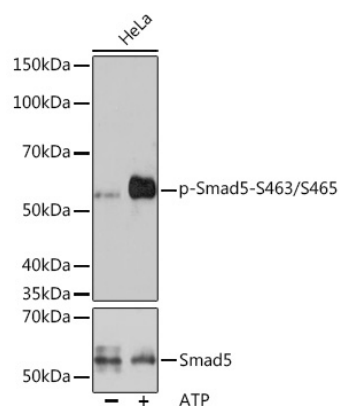
Affinity purification

### Storage

Store at -20°C. Avoid freeze / thaw cycles.

Buffer: PBS with 0.02% sodium azide, 0.05% BSA, 50% glycerol, pH7.3.

## Validation Data



Western blot analysis of extracts of HeLa cells, using Phospho-Smad5-S463/S465 antibody (AP1023) at 1:1000 dilution or Smad5 antibody (A1947). HeLa cells were treated by ATP (5 mM) at 30°C for 1 hour.

Secondary antibody: HRP Goat Anti-Rabbit IgG (H+L) (AS014) at 1:10000 dilution.

Lysates/proteins: 25µg per lane.

Blocking buffer: 3% BSA.

Detection: ECL Basic Kit (RM00020).

Exposure time: 3min.