

# Phospho-PKC alpha-T638 Rabbit mAb

Catalog No.: AP1045

Recombinant

1 Publications

## Basic Information

### Observed MW

80kDa

### Calculated MW

77kDa

### Category

Primary antibody

### Applications

ELISA,WB

### Cross-Reactivity

Mouse

### CloneNo number

ARC1591

## Background

Protein kinase C (PKC) is a family of serine- and threonine-specific protein kinases that can be activated by calcium and the second messenger diacylglycerol. PKC family members phosphorylate a wide variety of protein targets and are known to be involved in diverse cellular signaling pathways. PKC family members also serve as major receptors for phorbol esters, a class of tumor promoters. Each member of the PKC family has a specific expression profile and is believed to play a distinct role in cells. The protein encoded by this gene is one of the PKC family members. This kinase has been reported to play roles in many different cellular processes, such as cell adhesion, cell transformation, cell cycle checkpoint, and cell volume control. Knockout studies in mice suggest that this kinase may be a fundamental regulator of cardiac contractility and Ca(2+) handling in myocytes.

## Recommended Dilutions

WB 1:500 - 1:2000

## Immunogen Information

### Gene ID

5578

### Swiss Prot

P17252

### Immunogen

A synthetic phosphorylated peptide around T638 of human PKC alpha (P17252).

### Synonyms

AAG6; PKCA; PRKACA; PKCI+/-; PKCalpha; PKC-alpha; Phospho-PKC alpha-T638

## Contact

 | 400-999-6126 | [cn.market@abclonal.com.cn](mailto:cn.market@abclonal.com.cn) | [www.abclonal.com.cn](http://www.abclonal.com.cn)

## Product Information

### Source

Rabbit

### Isotype

IgG

### Purification

Affinity purification

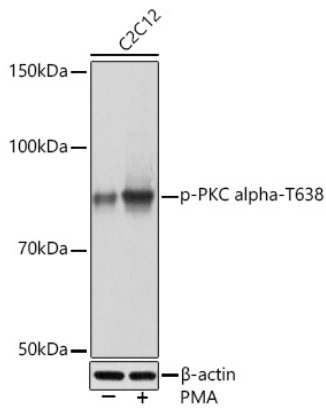
### Storage

Store at -20°C. Avoid freeze / thaw cycles.

Buffer: PBS with 0.02% sodium azide,0.05% BSA,50% glycerol,pH7.3.

## Validation Data

---



Western blot analysis of lysates from C2C12 cells, using Phospho-PKC alpha-T638 Rabbit mAb (AP1045) at 1:1000 dilution. C2C12 cells were treated by PMA/TPA (200 nM) at 37°C for 30 minutes after serum-starvation overnight.  
Secondary antibody: HRP-conjugated Goat anti-Rabbit IgG (H+L) (AS014) at 1:10000 dilution.  
Lysates/proteins: 25µg per lane.  
Blocking buffer: 3% BSA.  
Detection: ECL Basic Kit (RM00020).  
Exposure time: 10s.