

# Phospho-INSR-Y1189/Y1190 + IGF1R-Y1165/Y1166 Rabbit pAb

Catalog No.: AP1086 **2 Publications**

## Basic Information

### Observed MW

100kDa

### Calculated MW

154kDa/155kDa/156kDa

### Category

Primary antibody

### Applications

WB, ELISA

### Cross-Reactivity

Human, Mouse, Rat

## Background

This receptor binds insulin-like growth factor with a high affinity. It has tyrosine kinase activity. The insulin-like growth factor I receptor plays a critical role in transformation events. Cleavage of the precursor generates alpha and beta subunits. It is highly overexpressed in most malignant tissues where it functions as an anti-apoptotic agent by enhancing cell survival. Alternatively spliced transcript variants encoding distinct isoforms have been found for this gene. [provided by RefSeq, May 2014]

## Recommended Dilutions

**WB** 1:500 - 1:2000

**ELISA** Recommended starting concentration is 1 µg/mL. Please optimize the concentration based on your specific assay requirements.

## Immunogen Information

### Gene ID

3480/3643

### Swiss Prot

P08069/P06213

### Immunogen

Synthetic peptide. This information is considered to be commercially sensitive.

### Synonyms

IGF1R/INSR; Phospho-INSR-Y1189/Y1190 + IGF1R-Y1165/Y1166

## Contact

☎ | 400-999-6126

✉ | [cn.market@abclonal.com.cn](mailto:cn.market@abclonal.com.cn)

🌐 | [www.abclonal.com.cn](http://www.abclonal.com.cn)

## Product Information

### Source

Rabbit

### Isotype

IgG

### Purification

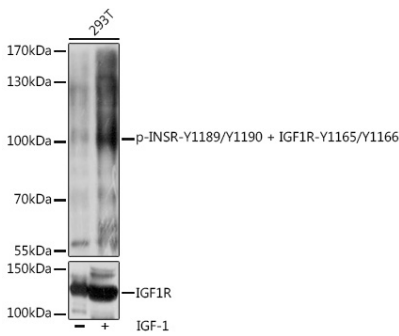
Affinity purification

### Storage

Store at -20°C. Avoid freeze / thaw cycles.

Buffer: PBS with 0.01% thimerosal, 50% glycerol, pH7.3.

# Validation Data



Western blot analysis of lysates from 293T cells, using Phospho-INSR-Y1189/Y1190 + IGF1R-Y1165/Y1166 Rabbit pAb (AP1086) at 1:1000 dilution or IGF1R antibody (A0243). 293T cells were treated with IGF-1 (50 ng/mL) at 37°C for 5 minutes after serum-starvation overnight. Secondary antibody: HRP-conjugated Goat anti-Rabbit IgG (H+L) (AS014) at 1:10000 dilution. Lysates/proteins: 25µg per lane. Blocking buffer: 3% BSA. Detection: ECL Basic Kit (RM00020). Exposure time: 1s.