

# Phospho-FOXO1-S319 Rabbit pAb

Catalog No.: AP1090

## Basic Information

### Observed MW

90kDa

### Calculated MW

70kDa

### Category

Primary antibody

### Applications

WB,IHC-P,ELISA

### Cross-Reactivity

Human, Mouse, Rat

## Background

This gene belongs to the forkhead family of transcription factors which are characterized by a distinct forkhead domain. The specific function of this gene has not yet been determined; however, it may play a role in myogenic growth and differentiation. Translocation of this gene with PAX3 has been associated with alveolar rhabdomyosarcoma.

## Recommended Dilutions

**WB** 1:500 - 1:2000

**IHC-P** 1:50 - 1:200

**ELISA** Recommended starting concentration is 1 µg/mL. Please optimize the concentration based on your specific assay requirements.

## Immunogen Information

### Gene ID

2308

### Swiss Prot

Q12778

### Immunogen

A synthetic phosphorylated peptide around S319 of human FOXO1 (NP\_002006.2).

### Synonyms

FKH1; FKHR; FOXO1A; Phospho-FOXO1-S319

## Contact

☎ | 400-999-6126

✉ | [cn.market@abclonal.com.cn](mailto:cn.market@abclonal.com.cn)

🌐 | [www.abclonal.com.cn](http://www.abclonal.com.cn)

## Product Information

### Source

Rabbit

### Isotype

IgG

### Purification

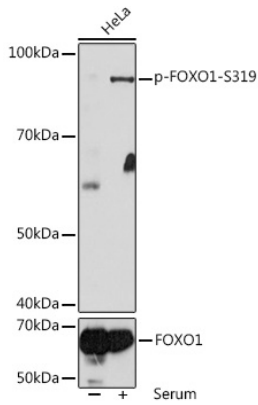
Affinity purification

### Storage

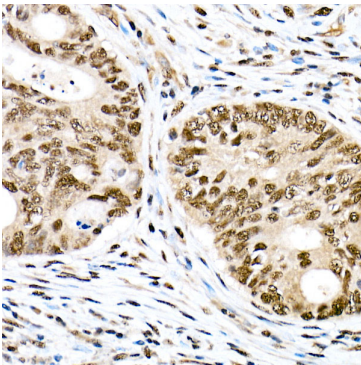
Store at -20°C. Avoid freeze / thaw cycles.

Buffer: PBS with 0.05% proclin300,50% glycerol,pH7.3.

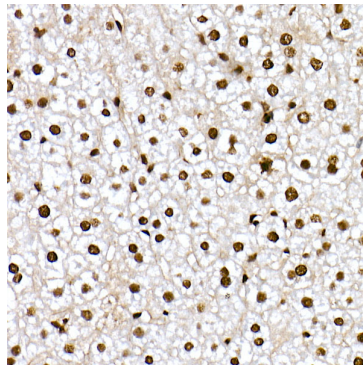
## Validation Data



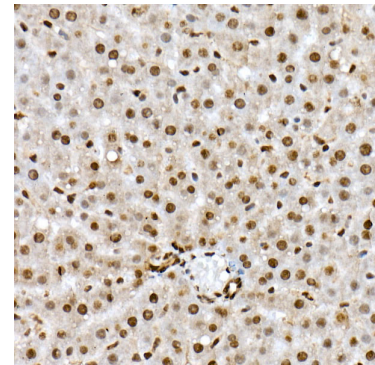
Western blot analysis of lysates from HeLa cells, using Phospho-FOXO1-S319 Rabbit pAb (AP1090) at 1:1000 dilution or FOXO1 antibody (A13862). HeLa cells were treated by 10% FBS at 37°C for 30 minutes after serum-starvation overnight.  
Secondary antibody: HRP-conjugated Goat anti-Rabbit IgG (H+L) (AS014) at 1:10000 dilution.  
Lysates/proteins: 25µg per lane.  
Blocking buffer: 3% BSA.  
Detection: ECL Basic Kit (RM00020).  
Exposure time: 10s.



Immunohistochemistry analysis of paraffin-embedded Human colon carcinoma using Phospho-FOXO1-S319 Rabbit pAb (AP1090) at dilution of 1:50 (40x lens). High pressure antigen retrieval performed with 0.01M Citrate Bufferr (pH 6.0) prior to IHC staining.



Immunohistochemistry analysis of paraffin-embedded Mouse liver using Phospho-FOXO1-S319 Rabbit pAb (AP1090) at dilution of 1:50 (40x lens). High pressure antigen retrieval performed with 0.01M Citrate Bufferr (pH 6.0) prior to IHC staining.



Immunohistochemistry analysis of paraffin-embedded Rat liver using Phospho-FOXO1-S319 Rabbit pAb (AP1090) at dilution of 1:50 (40x lens). High pressure antigen retrieval performed with 0.01M Citrate Bufferr (pH 6.0) prior to IHC staining.