

Phospho-HSF1-S326 Rabbit mAb

Catalog No.: AP1140 **Recombinant**

Basic Information

Observed MW

82kDa

Calculated MW

57kDa

Category

Primary antibody

Applications

ELISA, WB

Cross-Reactivity

Human

CloneNo number

ARC1601

Background

The product of this gene is a transcription factor that is rapidly induced after temperature stress and binds heat shock promoter elements (HSE). This protein plays a role in the regulation of lifespan. Expression of this gene is repressed by phosphorylation, which promotes binding by heat shock protein 90.

Recommended Dilutions

WB 1:500 - 1:1000

Immunogen Information

Gene ID

3297

Swiss Prot

Q00613

Immunogen

A synthetic phosphorylated peptide around S326 of human HSF1 (Q00613).

Synonyms

HSTF1; Phospho-HSF1-S326

Contact

☎ | 400-999-6126

✉ | cn.market@abclonal.com.cn

🌐 | www.abclonal.com.cn

Product Information

Source

Rabbit

Isotype

IgG

Purification

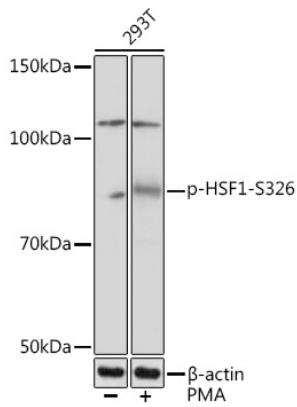
Affinity purification

Storage

Store at -20°C. Avoid freeze / thaw cycles.

Buffer: PBS with 0.02% sodium azide, 0.05% BSA, 50% glycerol, pH7.3.

Validation Data



Western blot analysis of lysates from 293T cells, using Phospho-HSF1-S326 Rabbit mAb (AP1140) at 1:1000 dilution. 293T cells were treated by PMA/TPA (200 nM) at 37°C for 30 minutes after serum-starvation overnight.
Secondary antibody: HRP-conjugated Goat anti-Rabbit IgG (H+L) (AS014) at 1:10000 dilution.
Lysates/proteins: 25µg per lane.
Blocking buffer: 3% BSA.
Detection: ECL Basic Kit (RM00020).
Exposure time: 1min.