

# Phospho-CDC37-S13 Rabbit mAb

Catalog No.: AP1141 **Recombinant**

## Basic Information

### Observed MW

50kDa

### Calculated MW

44kDa

### Category

Primary antibody

### Applications

WB, ELISA

### Cross-Reactivity

Human, Mouse, Rat

### CloneNo number

ARC1602

## Background

The protein encoded by this gene is highly similar to Cdc 37, a cell division cycle control protein of *Sacchomyces cerevisiae*. This protein is a molecular chaperone with specific function in cell signal transduction. It has been shown to form complex with Hsp90 and a variety of protein kinases including CDK4, CDK6, SRC, RAF-1, MOK, as well as eIF2 alpha kinases. It is thought to play a critical role in directing Hsp90 to its target kinases.

## Recommended Dilutions

**WB** 1:500 - 1:2000

**ELISA** Recommended starting concentration is 1 µg/mL. Please optimize the concentration based on your specific assay requirements.

## Immunogen Information

### Gene ID

11140

### Swiss Prot

Q16543

### Immunogen

Synthetic peptide. This information is considered to be commercially sensitive.

### Synonyms

P50CDC37; Phospho-CDC37-S13

## Contact

☎ | 400-999-6126

✉ | [cn.market@abclonal.com.cn](mailto:cn.market@abclonal.com.cn)

🌐 | [www.abclonal.com.cn](http://www.abclonal.com.cn)

## Product Information

### Source

Rabbit

### Isotype

IgG

### Purification

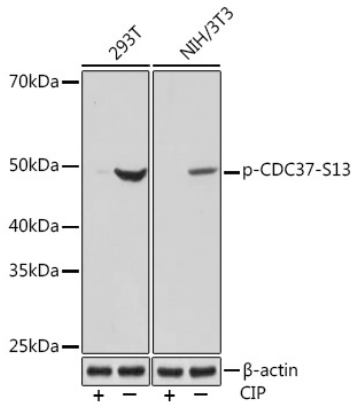
Affinity purification

### Storage

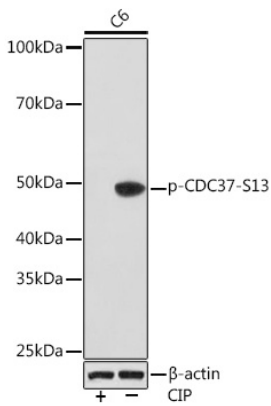
Store at -20°C. Avoid freeze / thaw cycles.

Buffer: PBS containing 50% glycerol and 0.05% BSA, preserved with proclin300 or sodium azide (as specified on the Certificate of Analysis), pH 7.3.

## Validation Data



Western blot analysis of various lysates using Phospho-CDC37-S13 Rabbit mAb (AP1141) at 1:1000 dilution. Both 293T cells and NIH/3T3 cells were treated by CIP(20uL/400ul) at 37°C for 1 hour. Secondary antibody: HRP-conjugated Goat anti-Rabbit IgG (H+L) (AS014) at 1:10000 dilution. Lysates/proteins: 25µg per lane. Blocking buffer: 3% BSA. Detection: ECL Basic Kit (RM00020). Exposure time: 10s.



Western blot analysis of lysates from C6 cells, using Phospho-CDC37-S13 Rabbit mAb (AP1141) at 1:1000 dilution. C6 cells were treated by CIP(20uL/400ul) at 37°C for 1 hour. Secondary antibody: HRP-conjugated Goat anti-Rabbit IgG (H+L) (AS014) at 1:10000 dilution. Lysates/proteins: 25µg per lane. Blocking buffer: 3% BSA. Detection: ECL Basic Kit (RM00020). Exposure time: 3min.