

Phospho-CRK/CRKII-Y221 Rabbit mAb

Catalog No.: AP1150 **Recombinant** **1 Publications**

Basic Information

Observed MW

34kDa

Calculated MW

34kDa

Category

Primary antibody

Applications

ELISA, WB

Cross-Reactivity

Human, Mouse, Rat

CloneNo number

ARC1640

Background

This gene encodes a member of an adapter protein family that binds to several tyrosine-phosphorylated proteins. The product of this gene has several SH2 and SH3 domains (src-homology domains) and is involved in several signaling pathways, recruiting cytoplasmic proteins in the vicinity of tyrosine kinase through SH2-phosphotyrosine interaction. The N-terminal SH2 domain of this protein functions as a positive regulator of transformation whereas the C-terminal SH3 domain functions as a negative regulator of transformation. Two alternative transcripts encoding different isoforms with distinct biological activity have been described.

Recommended Dilutions

WB 1:500 - 1:1000

Immunogen Information

Gene ID

1398

Swiss Prot

P46108

Immunogen

A synthetic phosphorylated peptide around Y221 of human CRK/CRKII/CRK (P46108).

Synonyms

p38; CRKII; Phospho-CRK/CRKII-Y221

Contact

☎ | 400-999-6126

✉ | cn.market@abclonal.com.cn

🌐 | www.abclonal.com.cn

Product Information

Source

Rabbit

Isotype

IgG

Purification

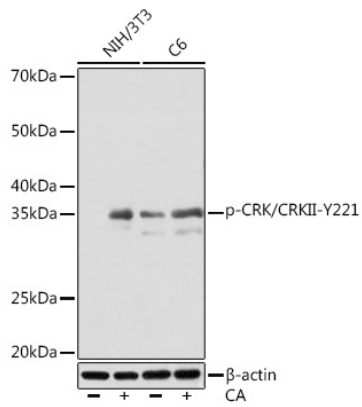
Affinity purification

Storage

Store at -20°C. Avoid freeze / thaw cycles.

Buffer: PBS with 0.02% sodium azide, 0.05% BSA, 50% glycerol, pH7.3.

Validation Data



Western blot analysis of various lysates using Phospho-CRK/CRKII-Y221 Rabbit mAb (AP1150) at 1:1000 dilution. Both NIH/3T3 cells and C6 cells were treated by Calyculin A (100 nM) at 37°C for 30 minutes after serum-starvation overnight.
Secondary antibody: HRP-conjugated Goat anti-Rabbit IgG (H+L) (AS014) at 1:10000 dilution.
Lysates/proteins: 25µg per lane.
Blocking buffer: 3% BSA.
Detection: ECL Basic Kit (RM00020).
Exposure time: 10s.