

Phospho-Cdc6-S54 Rabbit mAb

Catalog No.: AP1153 **Recombinant**

Basic Information

Observed MW

63kDa

Calculated MW

63kDa

Category

Primary antibody

Applications

ELISA, WB

Cross-Reactivity

Mouse

CloneNo number

ARC1693

Background

The protein encoded by this gene is highly similar to *Saccharomyces cerevisiae* Cdc6, a protein essential for the initiation of DNA replication. This protein functions as a regulator at the early steps of DNA replication. It localizes in cell nucleus during cell cycle G1, but translocates to the cytoplasm at the start of S phase. The subcellular translocation of this protein during cell cycle is regulated through its phosphorylation by Cdks. Transcription of this protein was reported to be regulated in response to mitogenic signals through transcriptional control mechanism involving E2F proteins.

Recommended Dilutions

WB 1:500 - 1:1000

Immunogen Information

Gene ID

990

Swiss Prot

Q99741

Immunogen

A synthetic phosphorylated peptide around S54 of human Cdc6 (Q99741).

Synonyms

CDC18L; HsCDC6; MGOR55; HsCDC18; Phospho-Cdc6-S54

Contact

☎ | 400-999-6126

✉ | cn.market@abclonal.com.cn

🌐 | www.abclonal.com.cn

Product Information

Source

Rabbit

Isotype

IgG

Purification

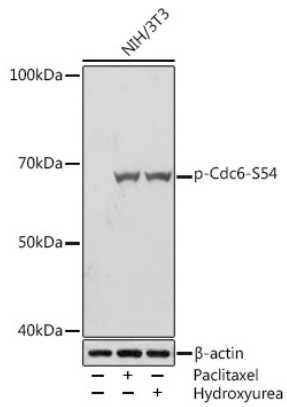
Affinity purification

Storage

Store at -20°C. Avoid freeze / thaw cycles.

Buffer: PBS with 0.02% sodium azide, 0.05% BSA, 50% glycerol, pH7.3.

Validation Data



Western blot analysis of lysates from NIH/3T3 cells, using Phospho-Cdc6-S54 Rabbit mAb (AP1153) at 1:1000 dilution. NIH/3T3 cells were treated by Paclitaxel (1 μ M) at 37°C for 20 hours. NIH/3T3 cells were treated by Hydroxyurea (4 mM) at 37°C for 20 hours. Secondary antibody: HRP-conjugated Goat anti-Rabbit IgG (H+L) (AS014) at 1:10000 dilution. Lysates/proteins: 25 μ g per lane. Blocking buffer: 3% BSA. Detection: ECL Basic Kit (RM00020). Exposure time: 5s.