

Phospho-LRRK2-S935 Rabbit mAb

Catalog No.: AP1154 **Recombinant**

Basic Information

Observed MW

286kDa

Calculated MW

286kDa

Category

Primary antibody

Applications

WB, ELISA

Cross-Reactivity

Mouse, Rat

CloneNo number

ARC1694

Background

This gene is a member of the leucine-rich repeat kinase family and encodes a protein with an ankryin repeat region, a leucine-rich repeat (LRR) domain, a kinase domain, a DFG-like motif, a RAS domain, a GTPase domain, a MLK-like domain, and a WD40 domain. The protein is present largely in the cytoplasm but also associates with the mitochondrial outer membrane. Mutations in this gene have been associated with Parkinson disease-8.

Recommended Dilutions

WB 1:500 - 1:2000

ELISA Recommended starting concentration is 1 µg/mL. Please optimize the concentration based on your specific assay requirements.

Immunogen Information

Gene ID

120892

Swiss Prot

Q5S007

Immunogen

Synthetic peptide. This information is considered to be commercially sensitive.

Synonyms

PARK8; RIPK7; ROCO2; AURA17; DARDARIN; Phospho-LRRK2-S935

Contact

☎ | 400-999-6126

✉ | cn.market@abclonal.com.cn

🌐 | www.abclonal.com.cn

Product Information

Source

Rabbit

Isotype

IgG

Purification

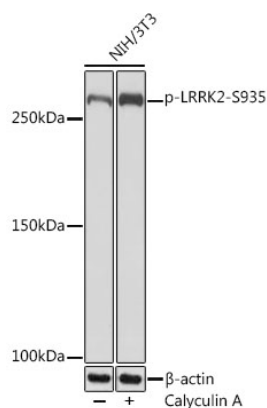
Affinity purification

Storage

Store at -20°C. Avoid freeze / thaw cycles.

Buffer: PBS with 0.02% sodium azide, 0.05% BSA, 50% glycerol, pH7.3.

Validation Data



Western blot analysis of lysates from NIH/3T3 cells, using Phospho-LRRK2-S935 Rabbit mAb (AP1154) at 1:1000 dilution. NIH/3T3 cells were treated with Calyculin A (100 nM) at 37°C for 30 minutes after serum-starvation overnight

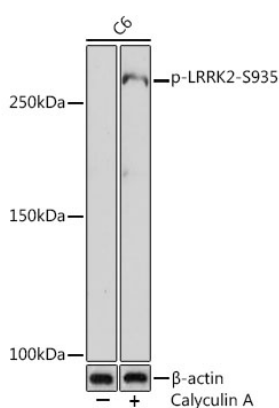
Secondary antibody: HRP-conjugated Goat anti-Rabbit IgG (H+L) (AS014) at 1:10000 dilution.

Lysates/proteins: 25µg per lane.

Blocking buffer: 3% BSA.

Detection: ECL Basic Kit (RM00020).

Exposure time: 3min.



Western blot analysis of lysates from C6 cells, using Phospho-LRRK2-S935 Rabbit mAb (AP1154) at 1:1000 dilution. C6 cells were treated with Calyculin A (100 nM) at 37°C for 30 minutes after serum-starvation overnight

Secondary antibody: HRP-conjugated Goat anti-Rabbit IgG (H+L) (AS014) at 1:10000 dilution.

Lysates/proteins: 25µg per lane.

Blocking buffer: 3% BSA.

Detection: ECL Enhanced Kit (RM00021).

Exposure time: 3min.