

Phospho-Paxillin-Y118 Rabbit mAb

Catalog No.: AP1156 **Recombinant**

Basic Information

Observed MW

68kDa

Calculated MW

65kDa

Category

Primary antibody

Applications

ELISA, WB

Cross-Reactivity

Human, Mouse, Rat

CloneNo number

ARC1696

Background

This gene encodes a cytoskeletal protein involved in actin-membrane attachment at sites of cell adhesion to the extracellular matrix (focal adhesion). Alternatively spliced transcript variants encoding different isoforms have been described for this gene. These isoforms exhibit different expression pattern, and have different biochemical, as well as physiological properties (PMID:9054445).

Recommended Dilutions

WB 1:500 - 1:2000

Immunogen Information

Gene ID

5829

Swiss Prot

P49023

Immunogen

A synthetic phosphorylated peptide around Y118 of human Paxillin (P49023).

Synonyms

PXN; paxillin; Phospho-Paxillin-Y118

Contact

☎ | 400-999-6126

✉ | cn.market@abclonal.com.cn

🌐 | www.abclonal.com.cn

Product Information

Source

Rabbit

Isotype

IgG

Purification

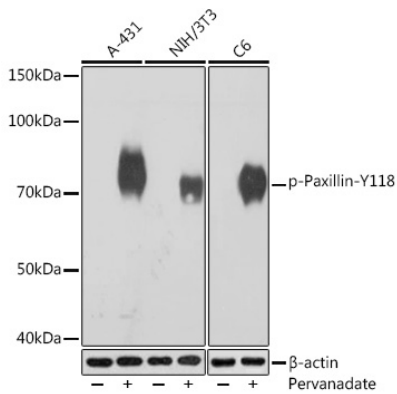
Affinity purification

Storage

Store at -20°C. Avoid freeze / thaw cycles.

Buffer: PBS with 0.02% sodium azide, 0.05% BSA, 50% glycerol, pH7.3.

Validation Data



Western blot analysis of extracts of various cell lines, using Phospho-Paxillin-Y118 Rabbit mAb (AP1156) at 1:1000 dilution. A-431 cells were treated by pervanadate (1 mM) at 37°C for 30 minutes after serum-starvation overnight. NIH/3T3 cells were treated by pervanadate (1 mM) at 37°C for 30 minutes after serum-starvation overnight. C6 cells were treated by pervanadate (1 mM) at 37°C for 30 minutes after serum-starvation overnight. Secondary antibody: HRP Goat Anti-Rabbit IgG (H+L) (AS014) at 1:10000 dilution. Lysates/proteins: 25µg per lane. Blocking buffer: 3% BSA. Detection: ECL Basic Kit (RM00020). Exposure time: 1s.