

# Phospho-LAT-Y191 Rabbit pAb

Catalog No.: AP1188

## Basic Information

### Observed MW

36kDa

### Calculated MW

28kDa

### Category

Primary antibody

### Applications

ELISA, WB

### Cross-Reactivity

Human, Mouse

## Background

The protein encoded by this gene is phosphorylated by ZAP-70/Syk protein tyrosine kinases following activation of the T-cell antigen receptor (TCR) signal transduction pathway. This transmembrane protein localizes to lipid rafts and acts as a docking site for SH2 domain-containing proteins. Upon phosphorylation, this protein recruits multiple adaptor proteins and downstream signaling molecules into multimolecular signaling complexes located near the site of TCR engagement. Alternative splicing results in multiple transcript variants encoding different isoforms.

## Recommended Dilutions

WB 1:500 - 1:1000

## Immunogen Information

### Gene ID

27040

### Swiss Prot

O43561

### Immunogen

A synthetic phosphorylated peptide around Y191 of human LAT (NP\_001014987.1).

### Synonyms

LAT1; pp36; IMD52; Phospho-LAT-Y191

## Contact

☎ | 400-999-6126

✉ | [cn.market@abclonal.com.cn](mailto:cn.market@abclonal.com.cn)

🌐 | [www.abclonal.com.cn](http://www.abclonal.com.cn)

## Product Information

### Source

Rabbit

### Isotype

IgG

### Purification

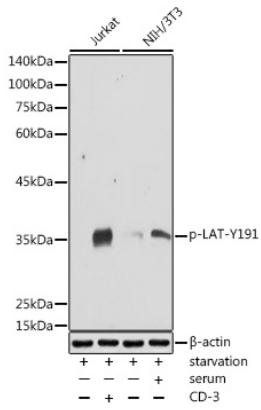
Affinity purification

### Storage

Store at -20°C. Avoid freeze / thaw cycles.

Buffer: PBS with 0.01% thimerosal, 50% glycerol, pH7.3.

## Validation Data



Western blot analysis of various lysates using Phospho-LAT-Y191 Rabbit pAb (AP1188) at 1:1000 dilution. Jurkat cells were treated by CD-3 (10 µg/mL) at 37°C for 2 minutes after serum-starvation overnight. NIH/3T3 cells were treated by 10% FBS at 37°C for 30 minutes after serum-starvation overnight. Secondary antibody: HRP-conjugated Goat anti-Rabbit IgG (H+L) (AS014) at 1:10000 dilution. Lysates/proteins: 25µg per lane. Blocking buffer: 3% nonfat dry milk in TBST. Detection: ECL Basic Kit (RM00020). Exposure time: 30s.