

Phospho-ULK1-S638 Rabbit pAb

Catalog No.: AP1196 **2 Publications**

Basic Information

Observed MW

150kDa

Calculated MW

113kDa

Category

Primary antibody

Applications

ELISA, WB

Cross-Reactivity

Human, Mouse

Background

Enables identical protein binding activity; protein serine/threonine kinase activity; and small GTPase binding activity. Involved in several processes, including autophagosome assembly; positive regulation by symbiont of host autophagy; and protein phosphorylation. Located in autophagosome; cytosol; and phagophore assembly site membrane. Is extrinsic component of autophagosome membrane; extrinsic component of omegasome membrane; and extrinsic component of phagophore assembly site membrane. Part of Atg1/ULK1 kinase complex.

Recommended Dilutions

WB 1:500 - 1:1000

Immunogen Information

Gene ID

8408

Swiss Prot

O75385

Immunogen

A synthetic phosphorylated peptide around S638 of human ULK1 (NP_003556.1).

Synonyms

ATG1; ATG1A; UNC51; hATG1; Unc51.1; Phospho-ULK1-S638

Contact

 | 400-999-6126

 | cn.market@abclonal.com.cn

 | www.abclonal.com.cn

Product Information

Source

Rabbit

Isotype

IgG

Purification

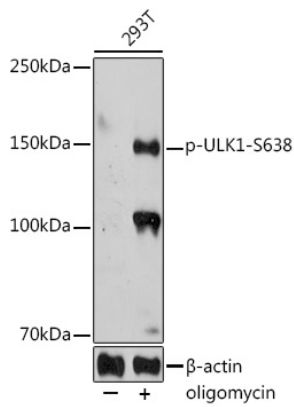
Affinity purification

Storage

Store at -20°C. Avoid freeze / thaw cycles.

Buffer: PBS with 0.01% thimerosal, 50% glycerol, pH7.3.

Validation Data



Western blot analysis of lysates from 293T cells, using Phospho-ULK1-S638 Rabbit pAb (AP1196) at 1:1000 dilution. 293T cells were treated by oligomycin (0.5 μ M) at 37°C for 30 minutes. Secondary antibody: HRP-conjugated Goat anti-Rabbit IgG (H+L) (AS014) at 1:10000 dilution. Lysates/proteins: 25 μ g per lane. Blocking buffer: 3% nonfat dry milk in TBST. Detection: ECL Basic Kit (RM00020). Exposure time: 180s.