

Phospho-RPS6KA5-T581 Rabbit pAb

Catalog No.: AP1197

Basic Information

Observed MW

90kDa

Calculated MW

90kDa

Category

Primary antibody

Applications

ELISA, WB

Cross-Reactivity

Rat

Background

Enables ATP binding activity and protein serine/threonine kinase activity. Involved in several processes, including histone-serine phosphorylation; positive regulation of histone modification; and regulation of transcription, DNA-templated. Located in cytoplasm and nucleoplasm.

Recommended Dilutions

WB 1:500 - 1:1000

Immunogen Information

Gene ID

9252

Swiss Prot

O75582

Immunogen

A synthetic phosphorylated peptide around T581 of human RPS6KA5 (NP_004746.2).

Synonyms

MSK1; RLPK; MSPK1; Phospho-RPS6KA5-T581

Contact

☎ | 400-999-6126

✉ | cn.market@abclonal.com.cn

🌐 | www.abclonal.com.cn

Product Information

Source

Rabbit

Isotype

IgG

Purification

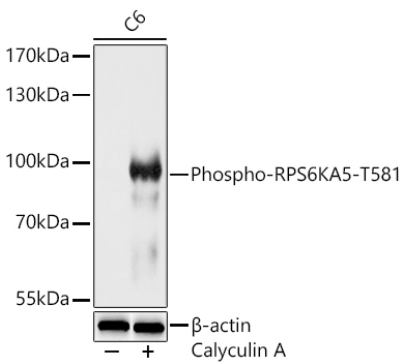
Affinity purification

Storage

Store at -20°C. Avoid freeze / thaw cycles.

Buffer: PBS with 0.01% thimerosal, 50% glycerol, pH7.3.

Validation Data



Western blot analysis of lysates from C6 cells using Phospho-RPS6KA5-T581 Rabbit pAb (AP1197) at 1:1000 dilution. C6 cells were treated by Calyculin A (100 nM) at 37°C for 30 minutes after serum-starvation overnight. Secondary antibody: HRP Goat Anti-Rabbit IgG (H+L) (AS014) at 1:10000 dilution. Lysates/proteins: 25 µg per lane. Blocking buffer: 3% nonfat dry milk in TBST. Detection: ECL Basic Kit (RM00020). Exposure time: 60s.