

Phospho-alt-RPL36-S142 Rabbit pAb

Catalog No.: AP1212

Basic Information

Observed MW

Refer to figures

Calculated MW

Category

Primary antibody

Applications

WB,DB,(ELISA)

Cross-Reactivity

Human

Background

Alt-RPL36 is a protein co-encoded with human RPL36. Alt-RPL36 partially localizes to the endoplasmic reticulum, where it interacts with TMEM24, which transports the phosphatidylinositol 4,5-bisphosphate (PI(4,5)P₂) precursor phosphatidylinositol from the endoplasmic reticulum to the plasma membrane. Alt-RPL36 contains four phosphoserine residues, point mutations of which abolish interaction with TMEM24 and, consequently, alt-RPL36 effects on PI3K signaling and cell size.

Recommended Dilutions

WB 1:500 - 1:2000

DB 1:500 - 1:1000

ELISA Recommended starting concentration is 1 µg/mL. Please optimize the concentration based on your specific assay requirements.

Immunogen Information

Gene ID

Swiss Prot

Immunogen

A synthetic phosphorylated peptide around S142 of alt-RPL36.

Synonyms

Contact

☎ | 400-999-6126

✉ | cn.market@abclonal.com.cn

🌐 | www.abclonal.com.cn

Product Information

Source

Rabbit

Isotype

IgG

Purification

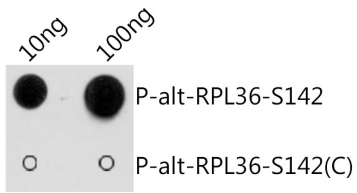
Affinity purification

Storage

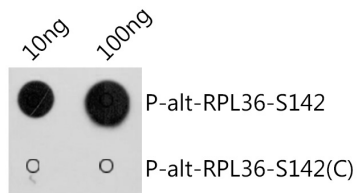
Store at -20°C. Avoid freeze / thaw cycles.

Buffer: PBS with 0.01% thimerosal, 50% glycerol, pH7.3.

Validation Data



Dot-blot analysis of all sorts of peptides using Phospho-alt-RPL36-S142 antibody (AP1212) at 1:1000 dilution. Exposure time: 1s.



Dot-blot analysis of all sorts of peptides using Phospho-alt-RPL36-S142 antibody (AP1212) at 1:1000 dilution. Exposure time: 30s.