

Phospho-MAP3K5-T845 Rabbit pAb

Catalog No.: AP1215 **1 Publications**

Basic Information

Observed MW

155 kDa

Calculated MW

155 kDa

Category

Primary antibody

Applications

WB,ELISA

Cross-Reactivity

Human, Mouse

Background

Enables MAP kinase kinase kinase activity and protein kinase binding activity. Involved in several processes, including intrinsic apoptotic signaling pathway in response to endoplasmic reticulum stress; positive regulation of JNK cascade; and positive regulation of cell death. Acts upstream of or within several processes, including cellular response to reactive nitrogen species; intracellular signal transduction; and positive regulation of MAPK cascade. Predicted to be located in cytoplasm. Predicted to be part of IRE1-TRAF2-ASK1 complex and protein kinase complex. Is expressed in several structures, including alimentary system; branchial arch; central nervous system; heart; and sensory organ. Human ortholog(s) of this gene implicated in Huntington's disease. Orthologous to human MAP3K5 (mitogen-activated protein kinase kinase kinase 5).

Recommended Dilutions

WB 1:1000 - 1:6000

ELISA Recommended starting concentration is 1 µg/mL. Please optimize the concentration based on your specific assay requirements.

Immunogen Information

Gene ID

26408

Swiss Prot

O35099

Immunogen

Synthetic peptide. This information is considered to be commercially sensitive.

Synonyms

ASK; ASK1; Mekk5; MAPKKK5; 7420452D20Rik; Phospho-MAP3K5-T845

Contact

☎ | 400-999-6126

✉ | cn.market@abclonal.com.cn

🌐 | www.abclonal.com.cn

Product Information

Source

Rabbit

Isotype

IgG

Purification

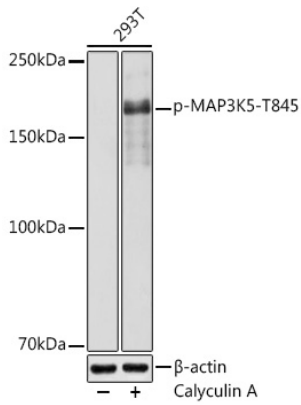
Affinity purification

Storage

Store at -20°C. Avoid freeze / thaw cycles.

Buffer: PBS with 0.09% Sodium azide,50% glycerol,pH7.3.

Validation Data



Western blot analysis of lysates from 293T cells, using Phospho-MAP3K5-T845 Rabbit pAb (AP1215) at 1:1000 dilution. 293T cells were treated with Calyculin A (100 nM) at 37°C for 30 minutes after serum-starvation overnight.

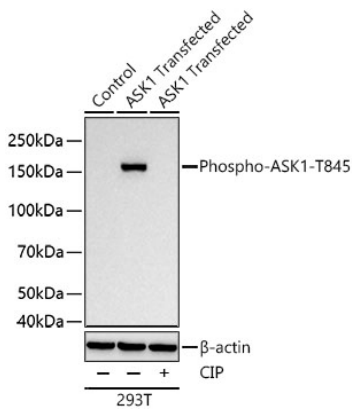
Secondary antibody: HRP-conjugated Goat anti-Rabbit IgG (H+L) (AS014) at 1:10000 dilution.

Lysates/proteins: 25 µg per lane.

Blocking buffer: 3% nonfat dry milk in TBST.

Detection: ECL Basic Kit (RM00020).

Exposure time: 1s.



Western blot analysis of lysates from 293T cells using Phospho-MAP3K5-T845 Rabbit pAb (AP1215) at 1:1000 dilution incubated overnight at 4°C. 293T Transfected with Phospho-ASK1-T845(Mouse) cells were treated with CIP (10 U/µL) at 37°C for 1 hour.

Secondary antibody: HRP-conjugated Goat anti-Rabbit IgG (H+L) (AS014) at 1:10000 dilution.

Lysates/proteins: 30 µg per lane.

Blocking buffer: 3% nonfat dry milk in TBST.

Detection: ECL Basic Kit (RM00020).

Exposure time: 5 s.