

Phospho-IkB α -S32 Rabbit pAb

Catalog No.: AP1220

1 Publications

Basic Information

Observed MW

40kDa

Calculated MW

36kDa

Category

Primary antibody

Applications

ELISA, WB

Cross-Reactivity

Human, Mouse

Background

This gene encodes a member of the NF-kappa-B inhibitor family, which contain multiple ankrin repeat domains. The encoded protein interacts with REL dimers to inhibit NF-kappa-B/REL complexes which are involved in inflammatory responses. The encoded protein moves between the cytoplasm and the nucleus via a nuclear localization signal and CRM1-mediated nuclear export. Mutations in this gene have been found in ectodermal dysplasia anhidrotic with T-cell immunodeficiency autosomal dominant disease.

Recommended Dilutions

WB 1:500 - 1:1000

Immunogen Information

Gene ID

4792

Swiss Prot

P25963

Immunogen

A synthetic phosphorylated peptide around S32 of human NFKBIA (NP_065390.1).

Synonyms

IKBA; MAD-3; NFKBI; EDAID2; Phospho-IkB α -S32

Contact

☎ | 400-999-6126

✉ | cn.market@abclonal.com.cn

🌐 | www.abclonal.com.cn

Product Information

Source

Rabbit

Isotype

IgG

Purification

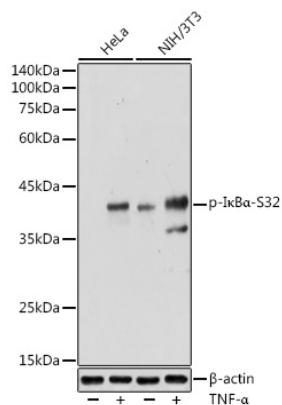
Affinity purification

Storage

Store at -20°C. Avoid freeze / thaw cycles.

Buffer: PBS with 0.01% thimerosal, 50% glycerol, pH7.3.

Validation Data



Western blot analysis of various lysates using Phospho-IκBα-S32 Rabbit pAb (AP1220) at 1:1000 dilution. Both HeLa cells and NIH/3T3 cells were treated by TNF-α (20 ng/ml) at 37°C for 30 minutes. Secondary antibody: HRP Goat Anti-Rabbit IgG (H+L) (AS014) at 1:10000 dilution.

Lysates/proteins: 25μg per lane.

Blocking buffer: 3% nonfat dry milk in TBST.

Detection: ECL Enhanced Kit (RM00021).

Exposure time: 180s.