

# Phospho-MEK1-T292 Rabbit pAb

Catalog No.: AP1221

## Basic Information

### Observed MW

45kDa

### Calculated MW

43kDa

### Category

Primary antibody

### Applications

ELISA, WB

### Cross-Reactivity

Human, Rat

## Background

The protein encoded by this gene is a member of the dual specificity protein kinase family, which acts as a mitogen-activated protein (MAP) kinase kinase. MAP kinases, also known as extracellular signal-regulated kinases (ERKs), act as an integration point for multiple biochemical signals. This protein kinase lies upstream of MAP kinases and stimulates the enzymatic activity of MAP kinases upon wide variety of extra- and intracellular signals. As an essential component of MAP kinase signal transduction pathway, this kinase is involved in many cellular processes such as proliferation, differentiation, transcription regulation and development.

## Recommended Dilutions

WB 1:500 - 1:1000

## Immunogen Information

### Gene ID

5604

### Swiss Prot

Q02750

### Immunogen

A synthetic phosphorylated peptide around T292 of human MEK1 (NP\_002746.1).

### Synonyms

MEL; CFC3; MEK1; MKK1; MAPKK1; PRKMK1; Phospho-MEK1-T292

## Contact

☎ | 400-999-6126

✉ | [cn.market@abclonal.com.cn](mailto:cn.market@abclonal.com.cn)

🌐 | [www.abclonal.com.cn](http://www.abclonal.com.cn)

## Product Information

### Source

Rabbit

### Isotype

IgG

### Purification

Affinity purification

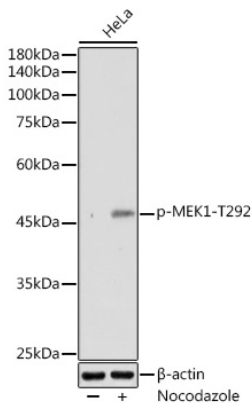
### Storage

Store at -20°C. Avoid freeze / thaw cycles.

Buffer: PBS with 0.01% thimerosal, 50% glycerol, pH7.3.

## Validation Data

---



Western blot analysis of lysates from HeLa cells, using Phospho-MEK1-T292 Rabbit pAb (AP1221) at 1:1000 dilution. HeLa cells were treated by Nocodazole (100 ng/ml) at 37°C for 16 hours. Secondary antibody: HRP-conjugated Goat anti-Rabbit IgG (H+L) (AS014) at 1:10000 dilution. Lysates/proteins: 25µg per lane. Blocking buffer: 3% nonfat dry milk in TBST. Detection: ECL Basic Kit (RM00020). Exposure time: 60s.