

Phospho-CGAS-S420 Rabbit pAb

Catalog No.: AP1228 **2 Publications**

Basic Information

Observed MW

62kDa

Calculated MW

58kDa

Category

Primary antibody

Applications

ELISA, WB

Cross-Reactivity

Human, Rat

Background

The protein encoded by this gene is a DNA binding cytosolic protein that catalyzes the synthesis of cyclic guanosine monophosphate-adenosine monophosphate (cGAMP) after sensing the presence of DNA in the cytoplasm. cGAMP binds another protein, Stimulator of interferon genes (STING), leading to the induction of interferons, and a host immune response. Reduced expression of this gene inhibits interferon induction in the presence of some viral infections. Alternative splicing results in multiple transcript variants.

Recommended Dilutions

WB 1:500 - 1:1000

Immunogen Information

Gene ID

214763

Swiss Prot

Q8C6L5

Immunogen

A synthetic phosphorylated peptide around S420 of mouse CGAS (NP_775562.2).

Synonyms

Mb21d1; E330016A19Rik; Phospho-CGAS-S420

Contact

 | 400-999-6126

 | cn.market@abclonal.com.cn

 | www.abclonal.com.cn

Product Information

Source

Rabbit

Isotype

IgG

Purification

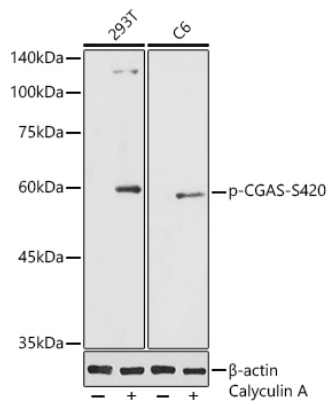
Affinity purification

Storage

Store at -20°C. Avoid freeze / thaw cycles.

Buffer: PBS with 0.05% proclin300, 50% glycerol, pH7.3.

Validation Data



Western blot analysis of various lysates using Phospho-CGAS-S420 Rabbit pAb (AP1228) at 1:1000 dilution. 293T and C6 cells were treated by Calyculin A (100 nM) at 37°C for 30 minutes after serum-starvation overnight. Secondary antibody: HRP-conjugated Goat anti-Rabbit IgG (H+L) (AS014) at 1:10000 dilution. Lysates/proteins: 25µg per lane. Blocking buffer: 3% nonfat dry milk in TBST. Detection: ECL Basic Kit (RM00020). Exposure time: 90s.