

# Phospho-RIPK1/RIP-S166 Rabbit pAb

Catalog No.: AP1230

8 Publications

## Basic Information

### Observed MW

75kDa

### Calculated MW

76kDa

### Category

Primary antibody

### Applications

WB, ELISA

### Cross-Reactivity

Human, Mouse

## Background

This gene encodes a member of the receptor-interacting protein (RIP) family of serine/threonine protein kinases. The encoded protein plays a role in inflammation and cell death in response to tissue damage, pathogen recognition, and as part of developmental regulation. RIPK1/RIPK3 kinase-mediated necrosis is referred to as necroptosis. Genetic disruption of this gene in mice results in death shortly after birth.

## Recommended Dilutions

**WB** 1:500 - 1:1000

**ELISA** Recommended starting concentration is 1 µg/mL. Please optimize the concentration based on your specific assay requirements.

## Immunogen Information

### Gene ID

8737

### Swiss Prot

Q13546

### Immunogen

Synthetic peptide. This information is considered to be commercially sensitive.

### Synonyms

RIP; RIP1; AIEFL; IMD57; RIP-1; Phospho-RIPK1/RIP-S166

## Contact

☎ | 400-999-6126

✉ | [cn.market@abclonal.com.cn](mailto:cn.market@abclonal.com.cn)

🌐 | [www.abclonal.com.cn](http://www.abclonal.com.cn)

## Product Information

### Source

Rabbit

### Isotype

IgG

### Purification

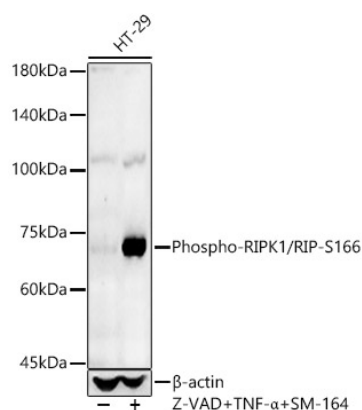
Affinity purification

### Storage

Store at -20°C. Avoid freeze / thaw cycles.

Buffer: PBS with 0.09% Sodium azide, 50% glycerol, pH7.3.

## Validation Data



Western blot analysis of lysates from HT-29 cells, using Phospho-RIPK1/RIP-S166 Rabbit pAb (AP1230) at 1:800 dilution. HT-29 cells were treated with Z-VAD (50uM), human TNF- $\alpha$  (50ng/ml) and SM-164 (200nM) at 37°C for 5 hour.

Secondary antibody: HRP-conjugated Goat anti-Rabbit IgG (H+L) (AS014) at 1:10000 dilution.

Lysates/proteins: 25 $\mu$ g per lane.

Blocking buffer: 3% nonfat dry milk in TBST.

Detection: ECL Basic Kit (RM00020).

Exposure time: 60s.