

Phospho-Tau-T181 Rabbit pAb

Catalog No.: AP1234 **1 Publications**

Basic Information

Observed MW

50-80kDa

Calculated MW

32-45kDa/78- 80kDa

Category

Primary antibody

Applications

ELISA,WB

Cross-Reactivity

Human, Mouse

Background

This gene encodes the microtubule-associated protein tau (MAPT) whose transcript undergoes complex, regulated alternative splicing, giving rise to several mRNA species. MAPT transcripts are differentially expressed in the nervous system, depending on stage of neuronal maturation and neuron type. MAPT gene mutations have been associated with several neurodegenerative disorders such as Alzheimer's disease, Pick's disease, frontotemporal dementia, cortico-basal degeneration and progressive supranuclear palsy.

Recommended Dilutions

WB 1:500 - 1:1000

Immunogen Information

Gene ID

4137

Swiss Prot

P10636-5

Immunogen

A synthetic phosphorylated peptide around T181 of human Tau (NP_001190181.1).

Synonyms

TAU; MSTD; PPND; DDPAC; MAPTL; MTBT1; MTBT2; tau-40; FTDP-17; PPP1R103; Tau-PHF6; Phospho-Tau-T181

Contact

☎ | 400-999-6126

✉ | cn.market@abclonal.com.cn

🌐 | www.abclonal.com.cn

Product Information

Source

Rabbit

Isotype

IgG

Purification

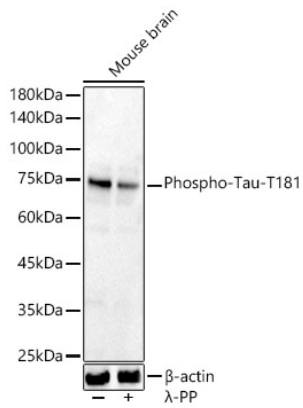
Affinity purification

Storage

Store at -20°C. Avoid freeze / thaw cycles.

Buffer: PBS with 0.05% proclin300,50% glycerol,pH7.3.

Validation Data



Western blot analysis of various lysates, using Phospho-Tau-T181 Rabbit pAb (AP1234) at 1:600 dilution. Mouse brain cells were treated by λ -PP mixed solution (1ul) at 30°C for 30 minutes. Secondary antibody: HRP Goat Anti-Rabbit IgG (H+L) (AS014) at 1:10000 dilution. Lysates/proteins: 25 μ g per lane. Blocking buffer: 3% nonfat dry milk in TBST. Detection: ECL Basic Kit (RM00020). Exposure time: 30s.