

Phospho-TDP-43/TARDBP-S409/S410 Rabbit pAb

Catalog No.: AP1241

Basic Information

Observed MW

Refer to figures

Calculated MW

45kDa

Category

Primary antibody

Applications

WB,DB,ELISA

Cross-Reactivity

Human

Background

HIV-1, the causative agent of acquired immunodeficiency syndrome (AIDS), contains an RNA genome that produces a chromosomally integrated DNA during the replicative cycle. Activation of HIV-1 gene expression by the transactivator Tat is dependent on an RNA regulatory element (TAR) located downstream of the transcription initiation site. The protein encoded by this gene is a transcriptional repressor that binds to chromosomally integrated TAR DNA and represses HIV-1 transcription. In addition, this protein regulates alternate splicing of the CFTR gene. A similar pseudogene is present on chromosome 20.

Recommended Dilutions

WB 1:500 - 1:2000

DB 1:500 - 1:1000

ELISA Recommended starting concentration is 1 µg/mL. Please optimize the concentration based on your specific assay requirements.

Immunogen Information

Gene ID

23435

Swiss Prot

Q13148

Immunogen

Synthetic peptide. This information is considered to be commercially sensitive.

Synonyms

ALS10; TDP-43; Phospho-TDP-43/TARDBP-S409/S410

Contact

☎ | 400-999-6126

✉ | cn.market@abclonal.com.cn

🌐 | www.abclonal.com.cn

Product Information

Source

Rabbit

Isotype

IgG

Purification

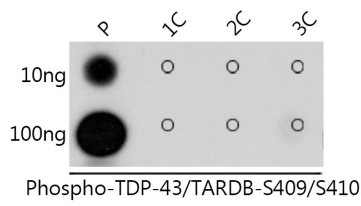
Affinity purification

Storage

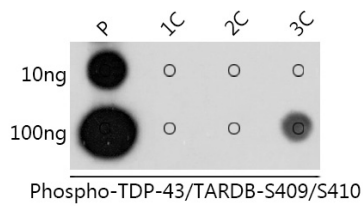
Store at -20°C. Avoid freeze / thaw cycles.

Buffer: PBS with 0.05% proclin300,50% glycerol,pH7.3.

Validation Data



Dot-blot analysis of all sorts of peptides using Phospho-TDP-43/TARDB-S409/S410 antibody (AP1241) at 1:1000 dilution. Exposure time: 1s.



Dot-blot analysis of all sorts of peptides using Phospho-TDP-43/TARDB-S409/S410 antibody (AP1241) at 1:1000 dilution. Exposure time: 10s.