

Phospho-HSL-S660 Rabbit pAb

Catalog No.: AP1242 **2 Publications**

Basic Information

Observed MW

81kDa,83kDa

Calculated MW

117kDa

Category

Primary antibody

Applications

WB

Cross-Reactivity

Human, Mouse, Rat

Background

The protein encoded by this gene has a long and a short form, generated by use of alternative translational start codons. The long form is expressed in steroidogenic tissues such as testis, where it converts cholesteryl esters to free cholesterol for steroid hormone production. The short form is expressed in adipose tissue, among others, where it hydrolyzes stored triglycerides to free fatty acids.

Recommended Dilutions

WB 1:500 - 1:2000

Immunogen Information

Gene ID

3991

Swiss Prot

Q05469

Immunogen

Synthetic peptide. This information is considered to be commercially sensitive.

Synonyms

HSL; LHS; REH; AOMS4; FPLD6; Phospho-HSL-S660

Contact

☎ | 400-999-6126

✉ | cn.market@abclonal.com.cn

🌐 | www.abclonal.com.cn

Product Information

Source

Rabbit

Isotype

IgG

Purification

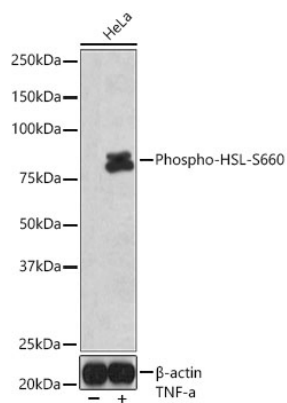
Affinity purification

Storage

Store at -20°C. Avoid freeze / thaw cycles.

Buffer: PBS with 0.02% sodium azide,50% glycerol,pH7.4.

Validation Data



Western blot analysis of lysates from HeLa cells, using Phospho-HSL-S660 Rabbit pAb (AP1242) at 1:1000 dilution. HeLa cells were treated with TNF- α (20 ng/ml) at 37°C for 30 minutes.
Secondary antibody: HRP-conjugated Goat anti-Rabbit IgG (H+L) (AS014) at 1:10000 dilution.
Lysates/proteins: 25 μ g per lane.
Blocking buffer: 3% nonfat dry milk in TBST.