

Phospho-Beclin 1-Ser15 Rabbit pAb

Catalog No.: AP1252

Basic Information

Observed MW

60kDa

Calculated MW

52kDa

Category

Primary antibody

Applications

ELISA, WB

Cross-Reactivity

Human, Mouse, Rat

Background

This gene encodes a protein that regulates autophagy, a catabolic process of degradation induced by starvation. The encoded protein is a component of the phosphatidylinositol-3-kinase (PI3K) complex which mediates vesicle-trafficking processes. This protein is thought to play a role in multiple cellular processes, including tumorigenesis, neurodegeneration and apoptosis. Alternative splicing results in multiple transcript variants.

Recommended Dilutions

WB 1:100 - 1:500

Immunogen Information

Gene ID

8678

Swiss Prot

Q14457

Immunogen

A synthetic phosphorylated peptide around S15 of human Beclin 1 (NP_003757.1).

Synonyms

ATG6; VPS30; beclin1; Phospho-Beclin 1-Ser15

Contact

☎ | 400-999-6126

✉ | cn.market@abclonal.com.cn

🌐 | www.abclonal.com.cn

Product Information

Source

Rabbit

Isotype

IgG

Purification

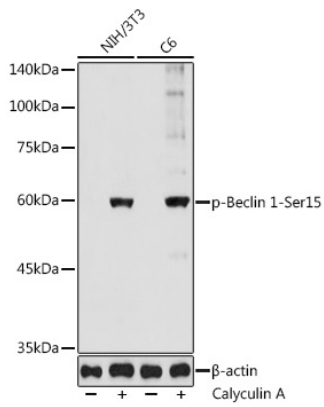
Affinity purification

Storage

Store at -20°C. Avoid freeze / thaw cycles.

Buffer: PBS with 0.05% proclin300, 50% glycerol, pH7.3.

Validation Data



Western blot analysis of various lysates using Phospho-Beclin 1-Ser15 Rabbit pAb (AP1252) at 1:500 dilution. NIH/3T3 and C6 cells were treated by Calyculin A (100 nM) at 37°C for 30 minutes after serum-starvation overnight.
Secondary antibody: HRP-conjugated Goat anti-Rabbit IgG (H+L) (AS014) at 1:10000 dilution.
Lysates/proteins: 25 μ g per lane.
Blocking buffer: 3% nonfat dry milk in TBST.
Detection: ECL Basic Kit (RM00020).
Exposure time: 30s.