

# Phospho-RIP3-S227 Rabbit pAb

Catalog No.: AP1257 **1 Publications**

## Basic Information

### Observed MW

Refer to figures

### Calculated MW

57kDa

### Category

Primary antibody

### Applications

IHC-P,IF/ICC,ELISA

### Cross-Reactivity

Human,Mouse,Rat

## Background

The product of this gene is a member of the receptor-interacting protein (RIP) family of serine/threonine protein kinases, and contains a C-terminal domain unique from other RIP family members. The encoded protein is predominantly localized to the cytoplasm, and can undergo nucleocytoplasmic shuttling dependent on novel nuclear localization and export signals. It is a component of the tumor necrosis factor (TNF) receptor-I signaling complex, and can induce apoptosis and weakly activate the NF-kappaB transcription factor.

## Recommended Dilutions

**IHC-P** 1:50 - 1:200

**IF/ICC** 1:50 - 1:200

**ELISA** Recommended starting concentration is 1 µg/mL. Please optimize the concentration based on your specific assay requirements.

## Immunogen Information

### Gene ID

11035

### Swiss Prot

Q9Y572

### Immunogen

Synthetic peptide. This information is considered to be commercially sensitive.

### Synonyms

RIP3; Phospho-RIP3-S227

## Contact

☎ | 400-999-6126

✉ | [cn.market@abclonal.com.cn](mailto:cn.market@abclonal.com.cn)

🌐 | [www.abclonal.com.cn](http://www.abclonal.com.cn)

## Product Information

### Source

Rabbit

### Isotype

IgG

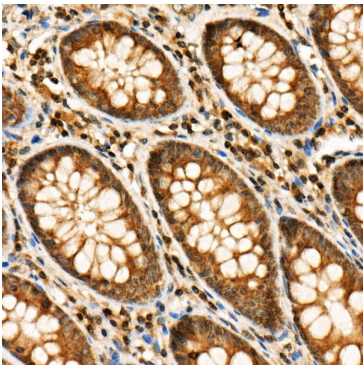
### Purification

Affinity purification

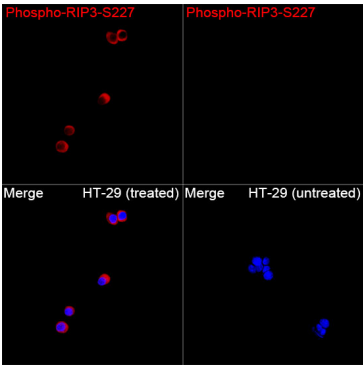
### Storage

Store at -20°C. Avoid freeze / thaw cycles.

Buffer: PBS with 0.09% Sodium azide,50% glycerol,pH7.3.



Immunohistochemistry analysis of paraffin-embedded Human colon using Phospho-RIP3-S227 Rabbit pAb (AP1257) at dilution of 1:20 (40x lens). High pressure antigen retrieval performed with 0.01M Citrate buffer (pH 6.0) prior to IHC staining.



Immunofluorescence analysis of HT-29 cells (treated with Z-VAD, hTNF- $\alpha$  and SM-164) and HT-29 cells (untreated) using Phospho-RIP3-S227 Rabbit pAb (AP1257) at a dilution of 1:100 (40x lens). Secondary antibody: Cy3-conjugated Goat anti-Rabbit IgG (H+L)(AS007) at 1:500 dilution. Blue: DAPI for nuclear staining.