

# Phospho-RIP3-T231/S232 Rabbit pAb

Catalog No.: AP1260

15 Publications

## Basic Information

### Observed MW

53kDa

### Calculated MW

53kDa

### Category

Primary antibody

### Applications

ELISA, WB

### Cross-Reactivity

Human, Mouse

## Background

Enables NF-kappaB-inducing kinase activity and protein serine/threonine kinase activity. Involved in several processes, including execution phase of necroptosis; hematopoietic or lymphoid organ development; and regulation of programmed cell death. Acts upstream of or within several processes, including I-kappaB kinase/NF-kappaB signaling; positive regulation of intrinsic apoptotic signaling pathway; and positive regulation of protein deacetylation. Located in cytoplasm and nucleus. Is expressed in several structures, including alimentary system; hemolymphoid system gland; male reproductive gland or organ; primitive streak; and turbinate bone primordium. Orthologous to human RIPK3 (receptor interacting serine/threonine kinase 3).

## Recommended Dilutions

WB 1:100 - 1:500

## Immunogen Information

### Gene ID

56532

### Swiss Prot

Q9QZL0

### Immunogen

A synthetic phosphorylated peptide around T231 & S232 of mouse Ripk3 (NP\_064339.2).

### Synonyms

Rip3; 2610528K09Rik; Phospho-RIP3-T231/S232

## Contact

☎ | 400-999-6126

✉ | [cn.market@abclonal.com.cn](mailto:cn.market@abclonal.com.cn)

🌐 | [www.abclonal.com.cn](http://www.abclonal.com.cn)

## Product Information

### Source

Rabbit

### Isotype

IgG

### Purification

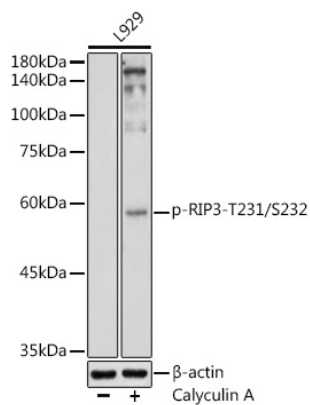
Affinity purification

### Storage

Store at -20°C. Avoid freeze / thaw cycles.

Buffer: PBS with 0.05% proclin300, 50% glycerol, pH7.3.

## Validation Data



Western blot analysis of lysates from L929 cells, using Phospho-RIP3-T231/S232 Rabbit pAb (AP1260) at 1:500 dilution. L929 cells were treated by Calyculin A (100 nM) at 37°C for 30 minutes after serum-starvation overnight.

Secondary antibody: HRP-conjugated Goat anti-Rabbit IgG (H+L) (AS014) at 1:10000 dilution.

Lysates/proteins: 25µg per lane.

Blocking buffer: 3% nonfat dry milk in TBST.

Detection: ECL Basic Kit (RM00020).

Exposure time: 180s.