

Phospho-EZH2/KMT6-T311 Rabbit pAb

Catalog No.: AP1269

Basic Information

Observed MW

98kDa

Calculated MW

85kDa

Category

Primary antibody

Applications

ELISA, WB

Cross-Reactivity

Rat

Background

This gene encodes a member of the Polycomb-group (PcG) family. PcG family members form multimeric protein complexes, which are involved in maintaining the transcriptional repressive state of genes over successive cell generations. This protein associates with the embryonic ectoderm development protein, the VAV1 oncoprotein, and the X-linked nuclear protein. This protein may play a role in the hematopoietic and central nervous systems. Multiple alternatively spliced transcript variants encoding distinct isoforms have been identified for this gene.

Recommended Dilutions

WB 1:500 - 1:1000

Immunogen Information

Gene ID

2146

Swiss Prot

Q15910

Immunogen

A synthetic phosphorylated peptide around T311 of human EZH2/KMT6 (NP_001190176.1).

Synonyms

WVS; ENX1; KMT6; WVS2; ENX-1; EZH2b; KMT6A; Phospho-EZH2/KMT6-T311

Contact

☎ | 400-999-6126

✉ | cn.market@abclonal.com.cn

🌐 | www.abclonal.com.cn

Product Information

Source

Rabbit

Isotype

IgG

Purification

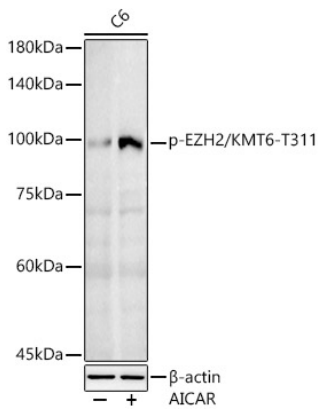
Affinity purification

Storage

Store at -20°C. Avoid freeze / thaw cycles.

Buffer: PBS with 0.05% proclin300, 50% glycerol, pH7.3.

Validation Data



Western blot analysis of lysates from C6 cells, using Phospho-EZH2/KMT6-T311 Rabbit pAb (AP1269) at 1:1000 dilution. C6 cells were treated by AICAR (0.5 mM) at 37°C for 30 minutes after serum-starvation overnight.
Secondary antibody: HRP-conjugated Goat anti-Rabbit IgG (H+L) (AS014) at 1:10000 dilution.
Lysates/proteins: 25µg per lane.
Blocking buffer: 3% nonfat dry milk in TBST.
Detection: ECL Enhanced Kit (RM00021).
Exposure time: 60s.