

# Phospho-S6 Ribosomal Protein (RPS6)-S240/244 Rabbit mAb

Catalog No.: AP1328 **Recombinant**

## Basic Information

### Observed MW

### Calculated MW

29kDa

### Category

Primary antibody

### Applications

ELISA, WB, IHC-P

### Cross-Reactivity

Human, Mouse, Rat

### CloneNo number

ARC54426

## Background

Ribosomes, the organelles that catalyze protein synthesis, consist of a small 40S subunit and a large 60S subunit. Together these subunits are composed of 4 RNA species and approximately 80 structurally distinct proteins. This gene encodes a cytoplasmic ribosomal protein that is a component of the 40S subunit. The protein belongs to the S6E family of ribosomal proteins. It is the major substrate of protein kinases in the ribosome, with subsets of five C-terminal serine residues phosphorylated by different protein kinases. Phosphorylation is induced by a wide range of stimuli, including growth factors, tumor-promoting agents, and mitogens. Dephosphorylation occurs at growth arrest. The protein may contribute to the control of cell growth and proliferation through the selective translation of particular classes of mRNA. As is typical for genes encoding ribosomal proteins, there are multiple processed pseudogenes of this gene dispersed through the genome.

## Recommended Dilutions

WB 1:2000 - 1:20000

IHC-P 1:100 - 1:500

## Immunogen Information

### Gene ID

6194

### Swiss Prot

P62753

### Immunogen

A synthetic phosphorylated peptide around S240 & S244 of human Phospho-S6 Ribosomal Protein (RPS6) (NP\_001001.2).

### Synonyms

S6; eS6; Phospho-S6 Ribosomal Protein (RPS6)-S240/244

## Contact

 | 400-999-6126 | [cn.market@abclonal.com.cn](mailto:cn.market@abclonal.com.cn) | [www.abclonal.com.cn](http://www.abclonal.com.cn)

## Product Information

### Source

Rabbit

### Isotype

IgG

### Purification

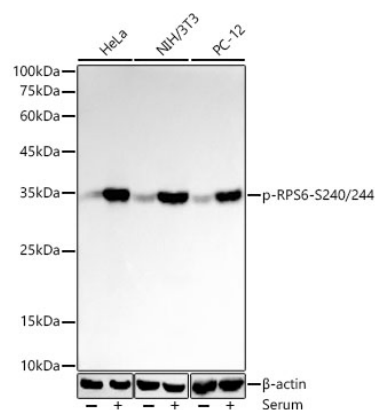
Affinity purification

### Storage

Store at -20°C. Avoid freeze / thaw cycles.

Buffer: PBS with 0.05% proclin300, 0.05% BSA, 50% glycerol, pH7.3.

## Validation Data



Western blot analysis of various lysates using Phospho-S6 Ribosomal Protein (RPS6)-S240/244 Rabbit mAb (AP1328) at 1:20000 dilution. HeLa and NIH/3T3 cell were treated by 10% FBS at 37°C for 30 minutes after serum-starvation overnight. PC-12 cells were treated by 20% FBS at 37°C for 20 minutes after serum-starvation overnight.

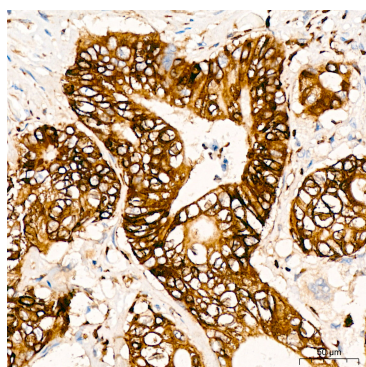
Secondary antibody: HRP Goat Anti-Rabbit IgG (H+L) (AS014) at 1:10000 dilution.

Lysates/proteins: 25µg per lane.

Blocking buffer: 3% nonfat dry milk in TBST.

Detection: ECL Basic Kit (RM00020).

Exposure time: 30s.



Immunohistochemistry analysis of Phospho-S6 Ribosomal Protein (RPS6)-S240/244 in paraffin-embedded human colon carcinoma tissue using Phospho-S6 Ribosomal Protein (RPS6)-S240/244 Rabbit mAb (AP1328) at a dilution of 1:200 (40x lens). High pressure antigen retrieval was performed with 0.01 M citrate buffer (pH 6.0) prior to IHC staining.