

# Phospho-PLC gamma 1 (PLCG1)-Y783 Rabbit mAb

Catalog No.: AP1340 **Recombinant**

## Basic Information

### Observed MW

155kDa

### Calculated MW

149kDa

### Category

Primary antibody

### Applications

ELISA, WB

### Cross-Reactivity

Mouse

### CloneNo number

ARC54936

## Background

The protein encoded by this gene catalyzes the formation of inositol 1,4,5-trisphosphate and diacylglycerol from phosphatidylinositol 4,5-bisphosphate. This reaction uses calcium as a cofactor and plays an important role in the intracellular transduction of receptor-mediated tyrosine kinase activators. For example, when activated by SRC, the encoded protein causes the Ras guanine nucleotide exchange factor RasGRP1 to translocate to the Golgi, where it activates Ras. Also, this protein has been shown to be a major substrate for heparin-binding growth factor 1 (acidic fibroblast growth factor)-activated tyrosine kinase. Two transcript variants encoding different isoforms have been found for this gene.

## Recommended Dilutions

WB 1:1000 - 1:5000

## Immunogen Information

### Gene ID

5335

### Swiss Prot

P19174

### Immunogen

A synthetic phosphorylated peptide around Y783 of human Phospho-PLC gamma 1 (PLCG1)-Y783 (NP\_877963.1).

### Synonyms

PLC1; NCKAP3; PLC-II; PLC148; PLCgamma1; Phospho-PLC gamma 1 (PLCG1)-Y783

## Contact

☎ | 400-999-6126

✉ | [cn.market@abclonal.com.cn](mailto:cn.market@abclonal.com.cn)

🌐 | [www.abclonal.com.cn](http://www.abclonal.com.cn)

## Product Information

### Source

Rabbit

### Isotype

IgG

### Purification

Affinity purification

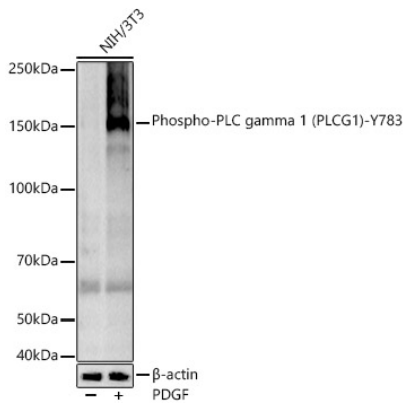
### Storage

Store at -20°C. Avoid freeze / thaw cycles.

Buffer: PBS with 0.05% proclin300, 0.05% BSA, 50% glycerol, pH7.3.

## Validation Data

---



Western blot analysis of various lysates, using Phospho-PLC gamma 1 (PLCG1)-Y783 Rabbit mAb (AP1340) at 1:2000 dilution. NIH/3T3 cells were treated by PDGF (100 ng/ml) at 37°C for 30 minutes after serum-starvation overnight.

Secondary antibody: HRP-conjugated Goat anti-Rabbit IgG (H+L) (AS014) at 1:10000 dilution.

Lysates/proteins: 25 $\mu$ g per lane.

Blocking buffer: 3% nonfat dry milk in TBST.

Detection: ECL Basic Kit (RM00020).

Exposure time: 60s.