

# Phospho-CDK1-Y15 Rabbit mAb

Catalog No.: AP1350 **Recombinant**

## Basic Information

**Observed MW**

34kDa

**Calculated MW**

34kDa

**Category**

Primary antibody

**Applications**

WB,ELISA

**Cross-Reactivity**

Human

**CloneNo number**

ARC55443

## Background

The protein encoded by this gene is a member of the Ser/Thr protein kinase family. This protein is a catalytic subunit of the highly conserved protein kinase complex known as M-phase promoting factor (MPF), which is essential for G1/S and G2/M phase transitions of eukaryotic cell cycle. Mitotic cyclins stably associate with this protein and function as regulatory subunits. The kinase activity of this protein is controlled by cyclin accumulation and destruction through the cell cycle. The phosphorylation and dephosphorylation of this protein also play important regulatory roles in cell cycle control. Alternatively spliced transcript variants encoding different isoforms have been found for this gene.

## Recommended Dilutions

**WB** 1:1000 - 1:5000**ELISA** Recommended starting concentration is 1 µg/mL. Please optimize the concentration based on your specific assay requirements.

## Immunogen Information

**Gene ID**

983

**Swiss Prot**

P06493

**Immunogen**

A synthetic phosphorylated peptide around Y15 of human CDK1(NP\_001777.1).

**Synonyms**

CDC2; CDC28A; P34CDC2; Phospho-CDK1-Y15

## Contact

 | 400-999-6126 | [cn.market@abclonal.com.cn](mailto:cn.market@abclonal.com.cn) | [www.abclonal.com.cn](http://www.abclonal.com.cn)

## Product Information

**Source**

Rabbit

**Isotype**

IgG

**Purification**

Affinity purification

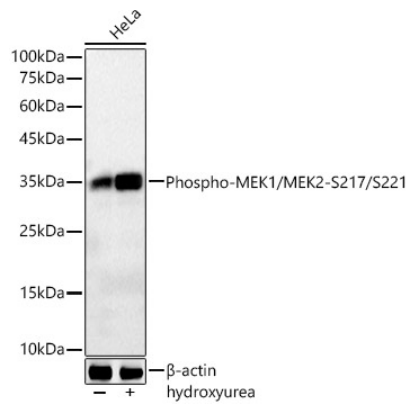
**Storage**

Store at -20°C. Avoid freeze / thaw cycles.

Buffer: PBS with 0.05% proclin300,0.05% BSA,50% glycerol,pH7.3.

## Validation Data

---



Western blot analysis of various lysates, using Phospho-CDK1-Y15 Rabbit mAb (AP1350) at 1:2000 dilution. HeLa cells were treated by Hydroxyurea (4 mM) at 37°C for 20 hours. Secondary antibody: HRP-conjugated Goat anti-Rabbit IgG (H+L) (AS014) at 1:10000 dilution. Lysates/proteins: 25µg per lane. Blocking buffer: 3% nonfat dry milk in TBST. Detection: ECL Basic Kit (RM00020). Exposure time: 3s.