

Phospho-PDK1/PDPK1-S241 Rabbit mAb

Catalog No.: AP1357 **Recombinant**

Basic Information

Observed MW

58-68kDa

Calculated MW

63kDa

Category

Primary antibody

Applications

ELISA, WB

Cross-Reactivity

Human

CloneNo number

ARC57184

Background

Enables 3-phosphoinositide-dependent protein kinase activity; phospholipase activator activity; and phospholipase binding activity. Involved in several processes, including cell surface receptor signaling pathway; regulation of protein kinase activity; and regulation of signal transduction. Acts upstream of or within intracellular signal transduction. Located in cell projection; cytosol; and plasma membrane. Implicated in prostate cancer. Biomarker of lung non-small cell carcinoma.

Recommended Dilutions

WB 1:1000 - 1:5000

Immunogen Information

Gene ID

5170

Swiss Prot

O15530

Immunogen

A synthetic phosphorylated peptide around S241 of human Phospho-PDK1/PDPK1-S241 (NP_002604.1).

Synonyms

PDK1; PDPK2; PDPK2P; PRO0461; Phospho-PDK1/PDPK1-S241

Contact

☎ | 400-999-6126

✉ | cn.market@abclonal.com.cn

🌐 | www.abclonal.com.cn

Product Information

Source

Rabbit

Isotype

IgG

Purification

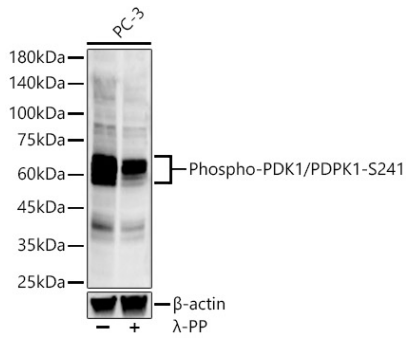
Affinity purification

Storage

Store at -20°C. Avoid freeze / thaw cycles.

Buffer: PBS with 0.05% proclin300, 0.05% BSA, 50% glycerol, pH7.3.

Validation Data



Western blot analysis of various lysates, using Phospho-PDK1/PDPK1-S241 antibody (AP1357) at 1:2000 dilution. PC-3 cells were treated by λ -PP mixed solution (1ul) at 30°C for 30 minutes. Secondary antibody: HRP Goat Anti-Rabbit IgG (H+L) (AS014) at 1:10000 dilution. Lysates/proteins: 25 μ g per lane. Blocking buffer: 3% nonfat dry milk in TBST. Detection: ECL Enhanced Kit (RM00021). Exposure time: 120s.