

Phospho-eIF4EBP1-S65 Rabbit mAb

Catalog No.: AP1363 **Recombinant** **4 Publications**

Basic Information

Observed MW

15-20kDa

Calculated MW

13kDa

Category

Primary antibody

Applications

ELISA, WB

Cross-Reactivity

Human, Mouse

CloneNo number

ARC53775

Background

This gene encodes one member of a family of translation repressor proteins. The protein directly interacts with eukaryotic translation initiation factor 4E (eIF4E), which is a limiting component of the multisubunit complex that recruits 40S ribosomal subunits to the 5' end of mRNAs. Interaction of this protein with eIF4E inhibits complex assembly and represses translation. This protein is phosphorylated in response to various signals including UV irradiation and insulin signaling, resulting in its dissociation from eIF4E and activation of mRNA translation.

Recommended Dilutions

WB 1:2000 - 1:20000

Immunogen Information

Gene ID

1978

Swiss Prot

Q13541

Immunogen

A synthetic phosphorylated peptide around S65 of human Phospho-eIF4EBP1-S65 (NP_004086.1).

Synonyms

BP-1; 4EBP1; 4E-BP1; PHAS-I; Phospho-eIF4EBP1-S65

Contact

☎ | 400-999-6126

✉ | cn.market@abclonal.com.cn

🌐 | www.abclonal.com.cn

Product Information

Source

Rabbit

Isotype

IgG

Purification

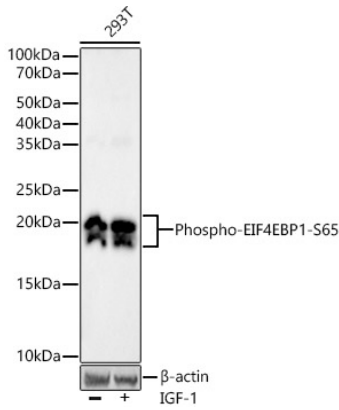
Affinity purification

Storage

Store at -20°C. Avoid freeze / thaw cycles.

Buffer: PBS with 0.05% proclin300, 0.05% BSA, 50% glycerol, pH7.3.

Validation Data



Western blot analysis of lysates from 293T cells, using Phospho-eIF4EBP1-S65 Rabbit mAb (AP1363) at 1:20000 dilution. 293T cells were treated by IGF-1 (50 ng/ml) at 37°C for 5 minutes after serum-starvation overnight.

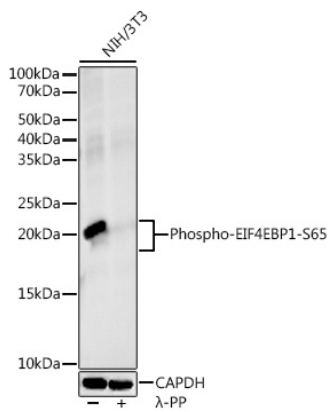
Secondary antibody: HRP-conjugated Goat anti-Rabbit IgG (H+L) (AS014) at 1:10000 dilution.

Lysates/proteins: 25µg per lane.

Blocking buffer: 3% nonfat dry milk in TBST.

Detection: ECL Basic Kit (RM00020).

Exposure time: 90s.



Western blot analysis of lysates from NIH/3T3 cells, using Phospho-eIF4EBP1-S65 Rabbit mAb (AP1363) at 1:20000 dilution. NIH/3T3 cells were treated by λ-PP mixed solution (1ul) at 30°C for 30 minutes.

Secondary antibody: HRP-conjugated Goat anti-Rabbit IgG (H+L) (AS014) at 1:10000 dilution.

Lysates/proteins: 25µg per lane.

Blocking buffer: 3% nonfat dry milk in TBST.

Detection: ECL Enhanced Kit (RM00021).

Exposure time: 180s.