

Phospho-eIF4EBP1-T37/T46 Rabbit mAb

Catalog No.: AP1381 **Recombinant**

Basic Information

Observed MW

15-20kDa

Calculated MW

13kDa

Category

Primary antibody

Applications

WB,ELISA

Cross-Reactivity

Rat

CloneNo number

ARC56491

Background

This gene encodes one member of a family of translation repressor proteins. The protein directly interacts with eukaryotic translation initiation factor 4E (eIF4E), which is a limiting component of the multisubunit complex that recruits 40S ribosomal subunits to the 5' end of mRNAs. Interaction of this protein with eIF4E inhibits complex assembly and represses translation. This protein is phosphorylated in response to various signals including UV irradiation and insulin signaling, resulting in its dissociation from eIF4E and activation of mRNA translation.

Recommended Dilutions

WB 1:2000 - 1:8000

ELISA Recommended starting concentration is 1 µg/mL. Please optimize the concentration based on your specific assay requirements.

Immunogen Information

Gene ID

1978

Swiss Prot

Q13541

Immunogen

A synthetic phosphorylated peptide around T37&T46 of human EIF4EBP1.

Synonyms

BP-1; 4EBP1; 4E-BP1; PHAS-I; Phospho-eIF4EBP1-T37/T46

Contact

☎ | 400-999-6126

✉ | cn.market@abclonal.com.cn

🌐 | www.abclonal.com.cn

Product Information

Source

Rabbit

Isotype

IgG

Purification

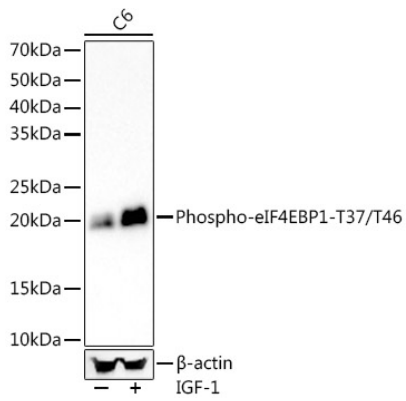
Affinity purification

Storage

Store at -20°C. Avoid freeze / thaw cycles.

Buffer: PBS with 0.05% proclin300,0.05% BSA,50% glycerol,pH7.3.

Validation Data



Western blot analysis of lysates from C6 cells, using Phospho-eIF4EBP1-T37/T46 Rabbit mAb (AP1381) at 1:7000 dilution. C6 cells were treated by IGF-1 (100 ng/ml) at 37°C for 30 minutes after serum-starvation overnight. Secondary antibody: HRP-conjugated Goat anti-Rabbit IgG (H+L) (AS014) at 1:10000 dilution. Lysates/proteins: 25µg per lane. Blocking buffer: 3% nonfat dry milk in TBST. Detection: ECL Basic Kit (RM00020). Exposure time: 180s.