

# Phospho-VEGF Receptor 2-Y1175 Rabbit mAb

Catalog No.: AP1385 **Recombinant**

## Basic Information

### Observed MW

230kDa

### Calculated MW

152kDa

### Category

Primary antibody

### Applications

WB,ELISA

### Cross-Reactivity

Human

### CloneNo number

ARC57293

## Background

Vascular endothelial growth factor (VEGF) is a major growth factor for endothelial cells. This gene encodes one of the two receptors of the VEGF. This receptor, known as kinase insert domain receptor, is a type III receptor tyrosine kinase. It functions as the main mediator of VEGF-induced endothelial proliferation, survival, migration, tubular morphogenesis and sprouting. The signalling and trafficking of this receptor are regulated by multiple factors, including Rab GTPase, P2Y purine nucleotide receptor, integrin alphaVbeta3, T-cell protein tyrosine phosphatase, etc.. Mutations of this gene are implicated in infantile capillary hemangiomas.

## Recommended Dilutions

**WB** 1:500 - 1:1000**ELISA** Recommended starting concentration is 1 µg/mL. Please optimize the concentration based on your specific assay requirements.

## Immunogen Information

**Gene ID**

3791

**Swiss Prot**

P35968

**Immunogen**

A synthetic phosphorylated peptide around Y1175 of human VEGF Receptor 2.

**Synonyms**

FLK1; CD309; VEGFR; VEGFR2; Phospho-VEGF Receptor 2-Y1175

## Contact

 | 400-999-6126 | [cn.market@abclonal.com.cn](mailto:cn.market@abclonal.com.cn) | [www.abclonal.com.cn](http://www.abclonal.com.cn)

## Product Information

**Source**

Rabbit

**Isotype**

IgG

**Purification**

Affinity purification

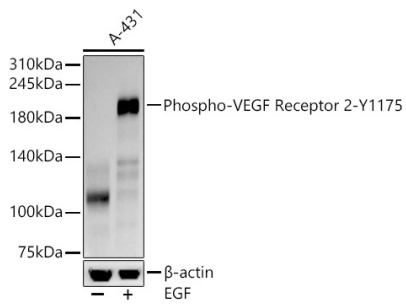
**Storage**

Store at -20°C. Avoid freeze / thaw cycles.

Buffer: PBS with 0.05% proclin300,0.05% BSA,50% glycerol,pH7.3.

## Validation Data

---



Western blot analysis of lysates from A-431 lysates cells, using Phospho-VEGF Receptor 2-Y1175 Rabbit mAb (AP1385) at 1:3000 dilution. A-431 cells were treated by EGF (100 ng/ml) at 37°C for 30 minutes after serum-starvation overnight.  
Secondary antibody: HRP-conjugated Goat anti-Rabbit IgG (H+L) (AS014) at 1:10000 dilution.  
Lysates/proteins: 25µg per lane.  
Blocking buffer: 3% nonfat dry milk in TBST.  
Detection: ECL Basic Kit (RM00020).  
Exposure time: 90s.