

Phospho-STAT6-Y641 Rabbit mAb

Catalog No.: AP1390

Recombinant

2 Publications

Basic Information

Observed MW

110kDa

Calculated MW

94kDa

Category

Primary antibody

Applications

ELISA, WB, IHC-P

Cross-Reactivity

Human, Mouse, Rat

CloneNo number

ARC57025

Background

The protein encoded by this gene is a member of the STAT family of transcription factors. In response to cytokines and growth factors, STAT family members are phosphorylated by the receptor associated kinases, and then form homo- or heterodimers that translocate to the cell nucleus where they act as transcription activators. This protein plays a central role in exerting IL4 mediated biological responses. It is found to induce the expression of BCL2L1/BCL-X(L), which is responsible for the anti-apoptotic activity of IL4. Knockout studies in mice suggested the roles of this gene in differentiation of T helper 2 (Th2) cells, expression of cell surface markers, and class switch of immunoglobulins. Alternative splicing results in multiple transcript variants.

Recommended Dilutions

WB 1:1000 - 1:5000

IHC-P 1:100 - 1:500

Immunogen Information

Gene ID

6778

Swiss Prot

P42226

Immunogen

A synthetic phosphorylated peptide around Y641 of human STAT6.

Synonyms

STAT6B; STAT6C; D12S1644; IL-4-STAT; Phospho-STAT6-Y641

Contact

 | 400-999-6126 | cn.market@abclonal.com.cn | www.abclonal.com.cn

Product Information

Source

Rabbit

Isotype

IgG

Purification

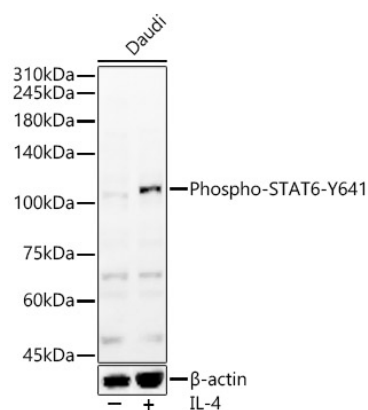
Affinity purification

Storage

Store at -20°C. Avoid freeze / thaw cycles.

Buffer: PBS with 0.05% proclin300, 0.05% BSA, 50% glycerol, pH7.3.

Validation Data



Western blot analysis of lysates from Daudi cells, using Phospho-STAT6-Y641 Rabbit mAb (AP1390) at 1:3000 dilution. Daudi cells were treated by IL-4 (100 ng/ml) at 37°C for 15 minutes after serum-starvation overnight.

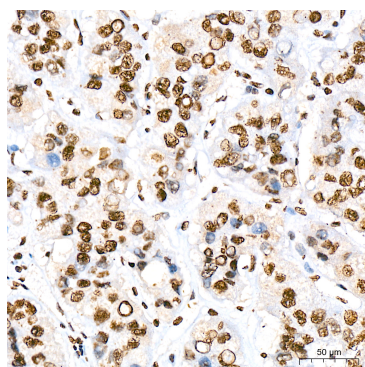
Secondary antibody: HRP Goat Anti-Rabbit IgG (H+L) (AS014) at 1:10000 dilution.

Lysates/proteins: 25µg per lane.

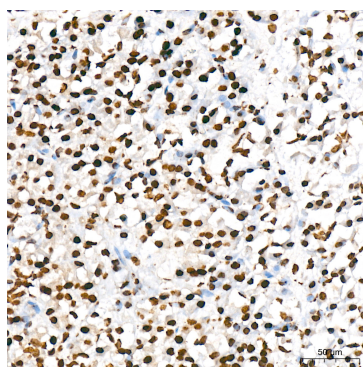
Blocking buffer: 3% nonfat dry milk in TBST.

Detection: ECL Basic Kit (RM00020).

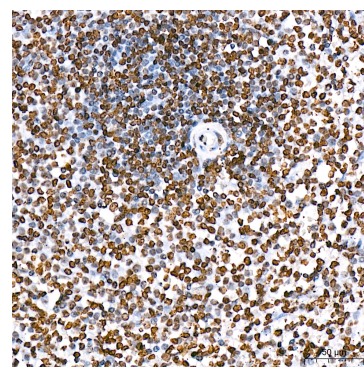
Exposure time: 180s.



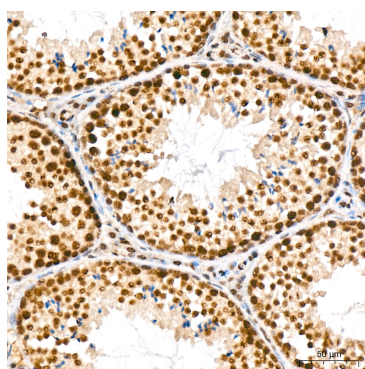
Immunohistochemistry analysis of Phospho-STAT6-Y641 in paraffin-embedded human liver cancer tissue using Phospho-STAT6-Y641 Rabbit mAb (AP1390) at a dilution of 1:200 (40x lens). High pressure antigen retrieval was performed with 0.01 M citrate buffer (pH 6.0) prior to IHC staining.



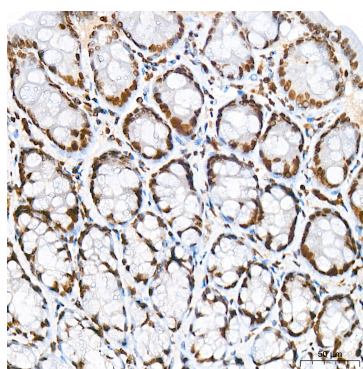
Immunohistochemistry analysis of Phospho-STAT6-Y641 in paraffin-embedded human pancreas tissue using Phospho-STAT6-Y641 Rabbit mAb (AP1390) at a dilution of 1:200 (40x lens). High pressure antigen retrieval was performed with 0.01 M citrate buffer (pH 6.0) prior to IHC staining.



Immunohistochemistry analysis of Phospho-STAT6-Y641 in paraffin-embedded human spleen tissue using Phospho-STAT6-Y641 Rabbit mAb (AP1390) at a dilution of 1:200 (40x lens). High pressure antigen retrieval was performed with 0.01 M citrate buffer (pH 6.0) prior to IHC staining.



Immunohistochemistry analysis of Phospho-STAT6-Y641 in paraffin-embedded mouse testis tissue using Phospho-STAT6-Y641 Rabbit mAb (AP1390) at a dilution of 1:200 (40x lens). High pressure antigen retrieval was performed with 0.01 M citrate buffer (pH 6.0) prior to IHC staining.



Immunohistochemistry analysis of Phospho-STAT6-Y641 in paraffin-embedded rat colon tissue using Phospho-STAT6-Y641 Rabbit mAb (AP1390) at a dilution of 1:200 (40x lens). High pressure antigen retrieval was performed with 0.01 M citrate buffer (pH 6.0) prior to IHC staining.