

# Phospho-p90Rsk/RSK1/RPS6KA1-T348 Rabbit pAb

Catalog No.: AP1397

## Basic Information

### Observed MW

83kDa

### Calculated MW

83kDa

### Category

Primary antibody

### Applications

ELISA, WB

### Cross-Reactivity

Human, Mouse, Rat

## Background

This gene encodes a member of the RSK (ribosomal S6 kinase) family of serine/threonine kinases. This kinase contains 2 nonidentical kinase catalytic domains and phosphorylates various substrates, including members of the mitogen-activated kinase (MAPK) signalling pathway. The activity of this protein has been implicated in controlling cell growth and differentiation. Alternate transcriptional splice variants, encoding different isoforms, have been characterized.

## Recommended Dilutions

WB 1:500 - 1:1000

## Immunogen Information

### Gene ID

6195

### Swiss Prot

Q15418

### Immunogen

A synthetic phosphorylated peptide around T348 of human p90Rsk/RSK1/RPS6KA1.

### Synonyms

RSK; HU-1; RSK1; p90Rsk; MAPKAPK1; MAPKAPK1A; Phospho-p90Rsk/RSK1/RPS6KA1-T348

## Contact

 | 400-999-6126

 | [cn.market@abclonal.com.cn](mailto:cn.market@abclonal.com.cn)

 | [www.abclonal.com.cn](http://www.abclonal.com.cn)

## Product Information

### Source

Rabbit

### Isotype

IgG

### Purification

Affinity purification

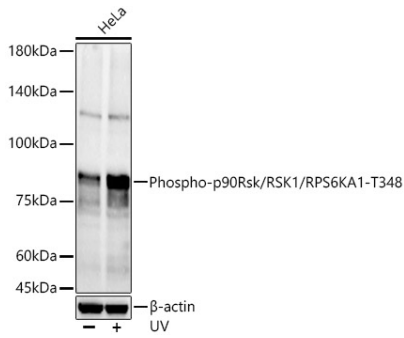
### Storage

Store at -20°C. Avoid freeze / thaw cycles.

Buffer: PBS with 0.05% proclin300, 50% glycerol, pH7.3.

## Validation Data

---



Western blot analysis of HeLa, using Phospho-p90Rsk/RSK1/RPS6KA1-T348 antibody (AP1397) at 1:600 dilution.

Secondary antibody: HRP Goat Anti-Rabbit IgG (H+L) (AS014) at 1:10000 dilution.

Lysates/proteins: 25µg per lane.

Blocking buffer: 3% nonfat dry milk in TBST.

Detection: ECL Basic Kit (RM00020).

Exposure time: 90s.