

Phospho-Cardiac Troponin I (TNNI3)-S23/S24 Rabbit mAb

Catalog No.: AP1400 **Recombinant**

Basic Information

Observed MW

Refer to figures

Calculated MW

24kDa

Category

Primary antibody

Applications

IHC-P, ELISA

Cross-Reactivity

Human

CloneNo number

ARC56024

Background

Troponin I (TnI), along with troponin T (TnT) and troponin C (TnC), is one of 3 subunits that form the troponin complex of the thin filaments of striated muscle. TnI is the inhibitory subunit; blocking actin-myosin interactions and thereby mediating striated muscle relaxation. The TnI subfamily contains three genes: TnI-skeletal-fast-twitch, TnI-skeletal-slow-twitch, and TnI-cardiac. This gene encodes the TnI-cardiac protein and is exclusively expressed in cardiac muscle tissues. Mutations in this gene cause familial hypertrophic cardiomyopathy type 7 (CMH7) and familial restrictive cardiomyopathy (RCM). Troponin I is useful in making a diagnosis of heart failure, and of ischemic heart disease. An elevated level of troponin is also now used as indicator of acute myocardial injury in patients hospitalized with moderate/severe Coronavirus Disease 2019 (COVID-19). Such elevation has also been associated with higher risk of mortality in cardiovascular disease patients hospitalized due to COVID-19.

Recommended Dilutions

IHC-P 1:500 - 1:1000**ELISA** Recommended starting concentration is 1 µg/mL. Please optimize the concentration based on your specific assay requirements.

Immunogen Information

Gene ID

7137

Swiss Prot

P19429

Immunogen

Synthetic peptide. This information is considered to be commercially sensitive.

Synonyms

CMH7; RCM1; cTnI; CMD2A; TNNC1; CMD1FF; Phospho-Cardiac Troponin I (TNNI3)-S23/S24

Contact

 | 400-999-6126 | cn.market@abclonal.com.cn | www.abclonal.com.cn

Product Information

Source

Rabbit

Isotype

IgG

Purification

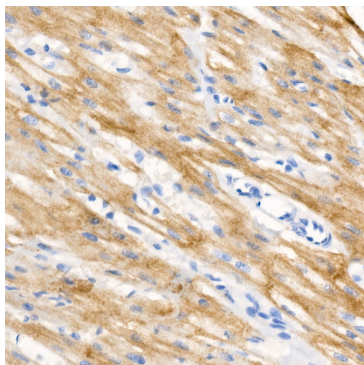
Affinity purification

Storage

Store at -20°C. Avoid freeze / thaw cycles.

Buffer: PBS containing 50% glycerol and 0.05% BSA, preserved with proclin300 or sodium azide (as specified on the Certificate of Analysis), pH 7.3.

Validation Data



Immunohistochemistry analysis of paraffin-embedded Human heart using Phospho-Cardiac Troponin I (TNNI3)-S23/S24 Rabbit mAb (AP1400) at dilution of 1:700 (40x lens). High pressure antigen retrieval performed with 0.01M Citrate buffer (pH 6.0) prior to IHC staining.