

Phospho-RIP3-T231/S232 Rabbit mAb

Catalog No.: AP1408 **Recombinant** **2 Publications**

Basic Information

Observed MW

46-62kDa

Calculated MW

53kDa

Category

Primary antibody

Applications

WB, ELISA

Cross-Reactivity

Mouse

CloneNo number

ARC58792

Background

Enables NF-kappaB-inducing kinase activity and protein serine/threonine kinase activity. Involved in several processes, including execution phase of necroptosis; hematopoietic or lymphoid organ development; and regulation of programmed cell death. Acts upstream of or within several processes, including I-kappaB kinase/NF-kappaB signaling; positive regulation of intrinsic apoptotic signaling pathway; and positive regulation of protein deacetylation. Located in cytoplasm and nucleus. Is expressed in several structures, including alimentary system; hemolymphoid system gland; male reproductive gland or organ; primitive streak; and turbinate bone primordium. Orthologous to human RIPK3 (receptor interacting serine/threonine kinase 3).

Recommended Dilutions

WB 1:500 - 1:1000

ELISA Recommended starting concentration is 1 µg/mL. Please optimize the concentration based on your specific assay requirements.

Immunogen Information

Gene ID

56532

Swiss Prot

Q9QZL0

Immunogen

Synthetic peptide. This information is considered to be commercially sensitive.

Synonyms

Rip3; 2610528K09Rik; Phospho-RIP3-T231/S232

Contact

☎ | 400-999-6126

✉ | cn.market@abclonal.com.cn

🌐 | www.abclonal.com.cn

Product Information

Source

Rabbit

Isotype

IgG

Purification

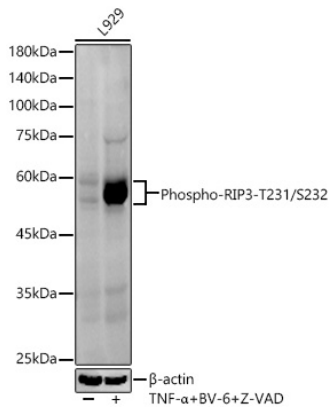
Affinity purification

Storage

Store at -20°C. Avoid freeze / thaw cycles.

Buffer: PBS containing 50% glycerol and 0.05% BSA, preserved with proclin300 or sodium azide (as specified on the Certificate of Analysis), pH 7.3.

Validation Data



Western blot analysis of lysates from L-929, using Phospho-RIP3-T231/S232 Rabbit mAb (AP1408) at 1:700 dilution. L-929 cells were treated with 20 ng/ml mouse TNF- α , 100 nM BV-6 and 20 μ M z-VAD for 5 or 6 hours.

Secondary antibody: HRP-conjugated Goat anti-Rabbit IgG (H+L) (AS014) at 1:10000 dilution.

Lysates/proteins: 25 μ g per lane.

Blocking buffer: 3% nonfat dry milk in TBST.

Detection: ECL Enhanced Kit (RM00021).

Exposure time: 60s.