

Phospho-Smad5-S465 Rabbit mAb

Catalog No.: AP1411 **Recombinant**

Basic Information

Observed MW

58kDa

Calculated MW

52kDa

Category

Primary antibody

Applications

ELISA, WB

Cross-Reactivity

Mouse, Rat

CloneNo number

ARC59204

Background

The protein encoded by this gene is involved in the transforming growth factor beta signaling pathway that results in an inhibition of the proliferation of hematopoietic progenitor cells. The encoded protein is activated by bone morphogenetic proteins type 1 receptor kinase, and may be involved in cancer. Alternative splicing results in multiple transcript variants.

Recommended Dilutions

WB 1:1000 - 1:5000

Immunogen Information

Gene ID

4090

Swiss Prot

Q99717

Immunogen

A synthetic phosphorylated peptide around S465 of human Smad5.

Synonyms

DWFC; JV5-1; MADH5; Phospho-Smad5-S465

Contact

☎ | 400-999-6126

✉ | cn.market@abclonal.com.cn

🌐 | www.abclonal.com.cn

Product Information

Source

Rabbit

Isotype

IgG

Purification

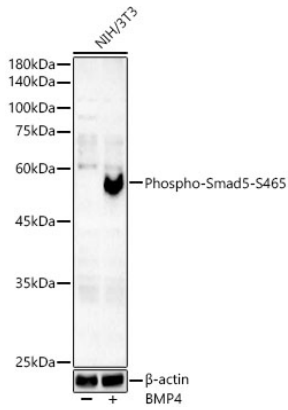
Affinity purification

Storage

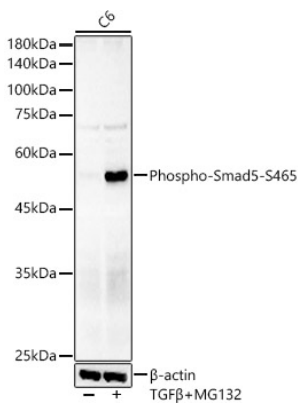
Store at -20°C. Avoid freeze / thaw cycles.

Buffer: PBS with 0.05% proclin300, 0.05% BSA, 50% glycerol, pH7.3.

Validation Data



Western blot analysis of lysates from NIH/3T3 cells, using Phospho-Smad5-S465 Rabbit mAb (AP1411) at 1:2000 dilution. NIH/3T3 cells were treated by BMP4(50ng/ml) at 37°C for 6 hours.
Secondary antibody: HRP-conjugated Goat anti-Rabbit IgG (H+L) (AS014) at 1:10000 dilution.
Lysates/proteins: 25µg per lane.
Blocking buffer: 3% nonfat dry milk in TBST.
Detection: ECL Basic Kit (RM00020).
Exposure time: 180s.



Western blot analysis of lysates from C6 cells, using Phospho-Smad5-S465 Rabbit mAb (AP1411) at 1:2000 dilution. C6 cells were treated by MG132(50 µM) and TGFβ at 37°C for 90 minutes.
Secondary antibody: HRP-conjugated Goat anti-Rabbit IgG (H+L) (AS014) at 1:10000 dilution.
Lysates/proteins: 25µg per lane.
Blocking buffer: 3% nonfat dry milk in TBST.
Detection: ECL Basic Kit (RM00020).
Exposure time: 180s.