

# Phospho-IRF3-S396 Rabbit mAb

Catalog No.: AP1412 **Recombinant** **1 Publications**

## Basic Information

### Observed MW

45-55kDa

### Calculated MW

47kDa

### Category

Primary antibody

### Applications

ELISA, WB, IF/ICC

### Cross-Reactivity

Human, Mouse

### CloneNo number

ARC53831

## Background

This gene encodes a member of the interferon regulatory transcription factor (IRF) family. The encoded protein is found in an inactive cytoplasmic form that upon serine/threonine phosphorylation forms a complex with CREBBP. This complex translocates to the nucleus and activates the transcription of interferons alpha and beta, as well as other interferon-induced genes. The protein plays an important role in the innate immune response against DNA and RNA viruses. Mutations in this gene are associated with Encephalopathy, acute, infection-induced, herpes-specific, 7.

## Recommended Dilutions

<b>WB</b>	1:2000 - 1:20000
<b>IF/ICC</b>	1:100 - 1:500

## Immunogen Information

### Gene ID

3661

### Swiss Prot

Q14653

### Immunogen

A synthetic phosphorylated peptide around S396 of human IRF3 (NP\_001562.1).

### Synonyms

IIAE7; Phospho-IRF3-S396

## Contact

☎ | 400-999-6126

✉ | [cn.market@abclonal.com.cn](mailto:cn.market@abclonal.com.cn)

🌐 | [www.abclonal.com.cn](http://www.abclonal.com.cn)

## Product Information

### Source

Rabbit

### Isotype

IgG

### Purification

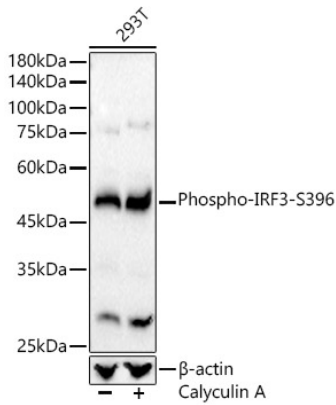
Affinity purification

### Storage

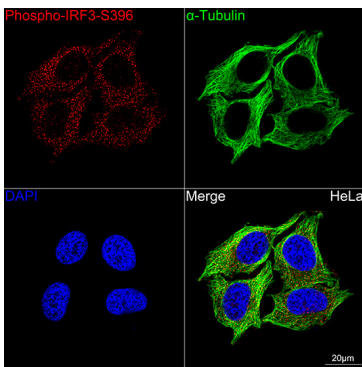
Store at -20°C. Avoid freeze / thaw cycles.

Buffer: PBS with 0.05% proclin300, 0.05% BSA, 50% glycerol, pH7.3.

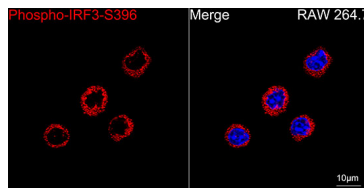
## Validation Data



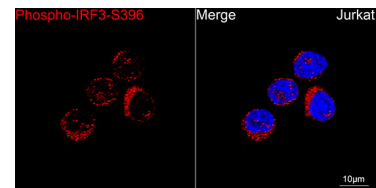
Western blot analysis of lysates from 293T cells, using Phospho-IRF3-S396 Rabbit mAb (AP1412) at 1:24000 dilution. 293T cells were treated by Calyculin A (100 nM) at 37°C for 30 minutes after serum-starvation overnight.  
 Secondary antibody: HRP-conjugated Goat anti-Rabbit IgG (H+L) (AS014) at 1:10000 dilution.  
 Lysates/proteins: 25µg per lane.  
 Blocking buffer: 3% nonfat dry milk in TBST.  
 Detection: ECL Basic Kit (RM00020).  
 Exposure time: 60s.



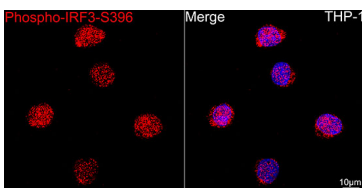
Confocal imaging of HeLa cells using Phospho-IRF3-S396 Rabbit mAb (AP1412, dilution 1:50) followed by a further incubation with Cy3 Goat Anti-Rabbit IgG (H+L) (AS007, dilution 1:500) (Red). The cells were counterstained with α-Tubulin mAb (AC012, dilution 1:400) followed by incubation with ABflo® 488-conjugated Goat Anti-Mouse IgG (H+L) Ab (AS076, dilution 1:500) (Green). DAPI was used for nuclear staining (blue). Objective: 100x.



Confocal imaging of RAW 264.7 cells using Phospho-IRF3-S396 Rabbit mAb (AP1412, dilution 1:50) followed by a further incubation with Cy3 Goat Anti-Rabbit IgG (H+L) (AS007, dilution 1:500) (Red). DAPI was used for nuclear staining (blue). Objective: 100x.



Confocal imaging of Jurkat cells using Phospho-IRF3-S396 Rabbit mAb (AP1412, dilution 1:50) followed by a further incubation with Cy3 Goat Anti-Rabbit IgG (H+L) (AS007, dilution 1:500) (Red). DAPI was used for nuclear staining (blue). Objective: 100x.



Confocal imaging of THP-1 cells using Phospho-IRF3-S396 Rabbit mAb (AP1412, dilution 1:50) followed by a further incubation with Cy3 Goat Anti-Rabbit IgG (H+L) (AS007, dilution 1:500) (Red). DAPI was used for nuclear staining (blue). Objective: 100x.