

Phospho-RIPK1-S166 Rabbit mAb

Catalog No.: AP1448 **Recombinant**

Basic Information

Observed MW

70kDa

Calculated MW

75kDa

Category

Primary antibody

Applications

ELISA, WB

Cross-Reactivity

Human

CloneNo number

ARC62873

Background

This gene encodes a member of the receptor-interacting protein (RIP) family of serine/threonine protein kinases. The encoded protein plays a role in inflammation and cell death in response to tissue damage, pathogen recognition, and as part of developmental regulation. RIPK1/RIPK3 kinase-mediated necrosis is referred to as necroptosis. Genetic disruption of this gene in mice results in death shortly after birth.

Recommended Dilutions

WB 1:2000 - 1:5000

Immunogen Information

Gene ID

8737

Swiss Prot

Q13546

Immunogen

A synthetic phosphorylated peptide around S166 of human RIPK1(NP_003795.2).

Synonyms

RIP; RIP1; AIEFL; IMD57; RIP-1; Phospho-RIPK1-S166

Contact

 | 400-999-6126

 | cn.market@abclonal.com.cn

 | www.abclonal.com.cn

Product Information

Source

Rabbit

Isotype

IgG

Purification

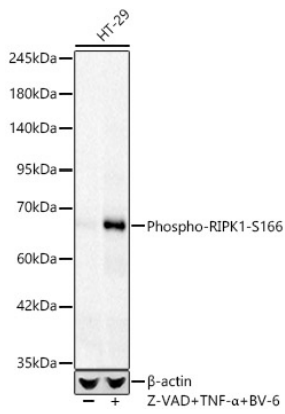
Affinity purification

Storage

Store at -20°C. Avoid freeze / thaw cycles.

Buffer: PBS with 0.05% proclin300, 0.05% BSA, 50% glycerol, pH7.3.

Validation Data



Western blot analysis of lysates from HT-29 cells, using Phospho-RIPK1-S166 Rabbit mAb (AP1448) at 1:4000 dilution. HT-29 cells were treated with Z-VAD (50 μ M), TNF- α (50ng/ml) and BV-6 (200nM) at 37°C for 5 hour.

Secondary antibody: HRP-conjugated Goat anti-Rabbit IgG (H+L) (AS014) at 1:10000 dilution.

Lysates/proteins: 25 μ g per lane.

Blocking buffer: 3% nonfat dry milk in TBST.

Detection: ECL Basic Kit (RM00020).

Exposure time: 30s.