

# Phospho-NF-kB p65/RelA-S468 Rabbit mAb

Catalog No.: AP1460

Recombinant

6 Publications

## Basic Information

### Observed MW

65kDa/

### Calculated MW

60kDa

### Category

Primary antibody

### Applications

WB,IP,ELISA

### Cross-Reactivity

Human, Mouse, Rat

### CloneNo number

ARC64675

## Background

NF-kappa-B is a ubiquitous transcription factor involved in several biological processes. It is held in the cytoplasm in an inactive state by specific inhibitors. Upon degradation of the inhibitor, NF-kappa-B moves to the nucleus and activates transcription of specific genes. NF-kappa-B is composed of NFKB1 or NFKB2 bound to either REL, RELA, or RELB. The most abundant form of NF-kappa-B is NFKB1 complexed with the product of this gene, RELA. Four transcript variants encoding different isoforms have been found for this gene.

## Recommended Dilutions

**WB** 1:2000 - 1:20000

**IP** 0.5µg-4µg antibody for  
200µg-400µg extracts of  
whole cells

**ELISA** Recommended starting  
concentration is 1 µg/mL.  
Please optimize the  
concentration based on  
your specific assay  
requirements.

## Immunogen Information

### Gene ID

5970

### Swiss Prot

Q04206

### Immunogen

Synthetic peptide. This information is considered to be commercially sensitive.

### Synonyms

p65; CMCU; NFKB3; AIF3BL3; Phospho-NF-kB p65/RelA-S468

## Contact

☎ | 400-999-6126

✉ | [cn.market@abclonal.com.cn](mailto:cn.market@abclonal.com.cn)

🌐 | [www.abclonal.com.cn](http://www.abclonal.com.cn)

## Product Information

### Source

Rabbit

### Isotype

IgG

### Purification

Affinity purification

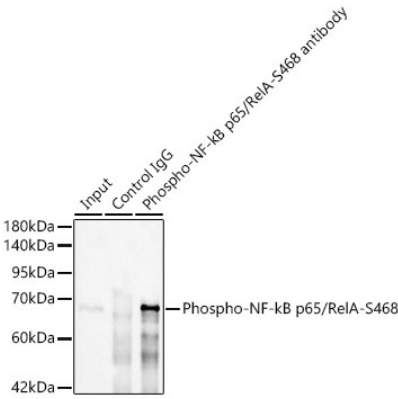
### Storage

Store at -20°C. Avoid freeze / thaw cycles.

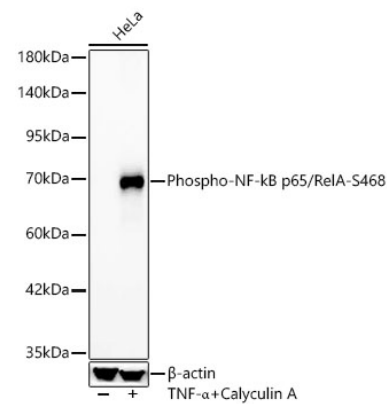
Buffer: PBS containing 50% glycerol and 0.05% BSA, preserved with proclin300 or sodium azide (as specified on the Certificate of Analysis), pH 7.3.

Validation Data

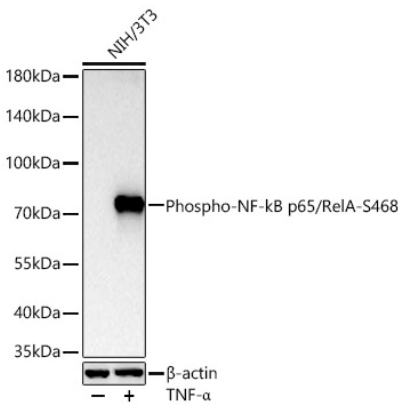
Immunoprecipitation of Phospho-NF- $\kappa$ B p65/RelA-S468 in 200  $\mu$ g extracts from HeLa cells treated with TNF- $\alpha$  and Calyculin A using 0.5  $\mu$ g Phospho-NF- $\kappa$ B p65/RelA-S468 Rabbit mAb (AP1460). Western blot analysis was performed using Phospho-NF- $\kappa$ B p65/RelA-S48 Rabbit mAb (AP1460) at 1:3000 dilution.



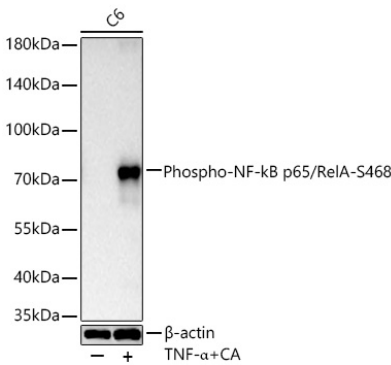
Western blot analysis of lysates from HeLa cells using Phospho-NF- $\kappa$ B p65/RelA-S468 Rabbit mAb (AP1460) at 1:2000 dilution. HeLa cells were treated with TNF- $\alpha$  (20 ng/ml) and Calyculin A (100 nM) at 37°C for 10 minutes. Secondary antibody: HRP-conjugated Goat anti-Rabbit IgG (H+L) (AS014) at 1:10000 dilution. Lysates/proteins: 25  $\mu$ g per lane. Blocking buffer: 3% nonfat dry milk in TBST. Detection: ECL Basic Kit (RM00020). Exposure time: 30s.



Western blot analysis of lysates from NIH/3T3 cells using Phospho-NF- $\kappa$ B p65/RelA-S468 Rabbit mAb (AP1460) at 1:16000 dilution incubated overnight at 4°C. NIH/3T3 cells were treated with TNF- $\alpha$  (50 ng/mL) at 37°C for 30 minutes. Secondary antibody: HRP-conjugated Goat anti-Rabbit IgG (H+L) (AS014) at 1:10000 dilution. Lysates/proteins: 25  $\mu$ g per lane. Blocking buffer: 3% nonfat dry milk in TBST. Detection: ECL Basic Kit (RM00020). Exposure time: 20s.



# Validation Data



Western blot analysis of lysates from C6 cells using Phospho-NF-kB p65/RelA-S468 Rabbit mAb (AP1460) at 1:16000 dilution incubated overnight at 4°C. C6 cells were treated with TNF-α (20 ng/ml) and Calyculin A (50 nM) at 37°C for 30 minutes  
Secondary antibody: HRP-conjugated Goat anti-Rabbit IgG (H+L) (AS014) at 1:10000 dilution.  
Lysates/proteins: 25 µg per lane.  
Blocking buffer: 3 % nonfat dry milk in TBST.  
Detection: ECL Basic Kit (RM00020).  
Exposure time: 20s.