

Phospho-TIFA-T9 Rabbit mAb

Catalog No.: AP1462 **Recombinant**

Basic Information

Observed MW

20kDa

Calculated MW

21kDa

Category

Primary antibody

Applications

ELISA, WB

Cross-Reactivity

Human

CloneNo number

ARC66052

Background

This gene encodes an adapter protein involved in adaptive and innate immunity. This protein includes a forkhead-associated (FHA) domain that specifically binds to phosphorylated serine and threonine residues. In response to bacterial infection, the encoded host cell protein undergoes an intermolecular interaction between the FHA domain and a phosphorylated threonine that leads to protein oligomerization and stimulation of the NF-kappa B and other downstream signaling pathways. This protein exhibits reduced expression in hepatocellular carcinoma and may suppress hepatocellular carcinoma progression. This protein may also play a role in the DNA damage response.

Recommended Dilutions

WB 1:2000 - 1:6000

Immunogen Information

Gene ID

92610

Swiss Prot

Q96CG3

Immunogen

A synthetic phosphorylated peptide around T9 of human TIFA(NP_443096.1).

Synonyms

T2BP; T6BP; TIFAA; Phospho-TIFA-T9

Contact

☎ | 400-999-6126

✉ | cn.market@abclonal.com.cn

🌐 | www.abclonal.com.cn

Product Information

Source

Rabbit

Isotype

IgG

Purification

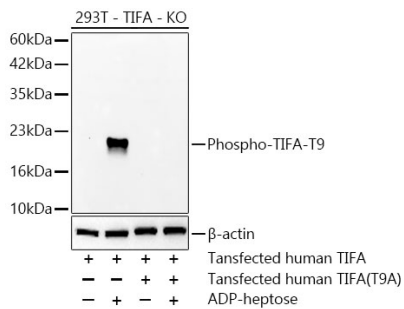
Affinity purification

Storage

Store at -20°C. Avoid freeze / thaw cycles.

Buffer: PBS with 0.05% proclin300, 0.05% BSA, 50% glycerol, pH7.3.

Validation Data



Western blot analysis of lysates from TIFA knockout (KO) 293T cells transfected with TIFA or mutational TIFA, using Phospho-TIFA-T9 Rabbit mAb (AP1462) at 1:5000 dilution, 293T cells were treated by ADP-heptose.

Secondary antibody: HRP-conjugated Goat anti-Rabbit IgG (H+L) (AS014) at 1:10000 dilution.

Lysates/proteins: 25 μ g per lane.

Blocking buffer: 3% nonfat dry milk in TBST.

Detection: ECL Basic Kit (RM00020).

Exposure time: 45s.

WB samples for antibody validation are kindly provided by Dr. Feng Shao, NIBS