

Phospho-AKT1S1/PRAS40-T246 Rabbit mAb

Catalog No.: AP1493 **Recombinant**

Basic Information

Observed MW

40kDa

Calculated MW

27kDa

Category

Primary antibody

Applications

ELISA, WB

Cross-Reactivity

Human, Mouse

CloneNo number

ARC66323

Background

AKT1S1 is a proline-rich substrate of AKT (MIM 164730) that binds 14-3-3 protein (see YWHAH, MIM 113508) when phosphorylated (Kovacina et al., 2003 [PubMed 12524439]).

Recommended Dilutions

WB 1:2000 - 1:9000

Immunogen Information

Gene ID

84335

Swiss Prot

Q96B36

Immunogen

A synthetic phosphorylated peptide around T246 of human AKT1S1/PRAS40 (NP_001265088.1).

Synonyms

Lobe; PRAS40

Contact

☎ | 400-999-6126

✉ | cn.market@abclonal.com.cn

🌐 | www.abclonal.com.cn

Product Information

Source

Rabbit

Isotype

IgG

Purification

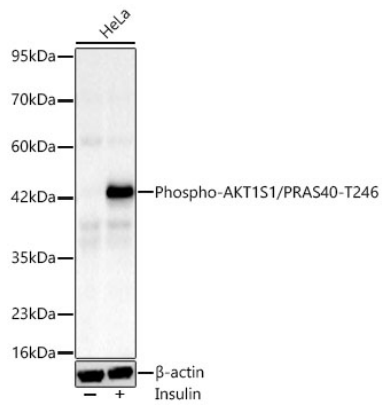
Affinity purification

Storage

Store at -20°C. Avoid freeze / thaw cycles.

Buffer: PBS with 0.05% proclin300, 0.05% BSA, 50% glycerol, pH7.3.

Validation Data



Western blot analysis of lysates from HeLa cells using Phospho-AKT1S1/PRAS40-T246 Rabbit mAb (AP1493) at 1:8100 dilution incubated overnight at 4°C. HeLa cells were treated by Insulin (50 nM) at 37°C for 5 minutes after serum-starvation overnight.
Secondary antibody: HRP-conjugated Goat anti-Rabbit IgG (H+L) (AS014) at 1:10000 dilution.
Lysates/proteins: 30 µg per lane.
Blocking buffer: 3% nonfat dry milk in TBST.
Detection: ECL Basic Kit (RM00020).
Exposure time: 60s.