

Phospho-NRF2-S40 Rabbit mAb

Catalog No.: AP1498 **Recombinant**

Basic Information

Observed MW

100 kDa

Calculated MW

68 kDa

Category

Primary antibody

Applications

WB,IF/ICC,IF-P,IHC-P,ELISA

Cross-Reactivity

Human, Mouse, Rat

CloneNo number

ARC3292

Background

This gene encodes a transcription factor which is a member of a small family of basic leucine zipper (bZIP) proteins. The encoded transcription factor regulates genes which contain antioxidant response elements (ARE) in their promoters; many of these genes encode proteins involved in response to injury and inflammation which includes the production of free radicals. Multiple transcript variants encoding different isoforms have been characterized for this gene.

Recommended Dilutions

WB	1:10000 - 1:60000
IF/ICC	1:50 - 1:200
IF-P	1:50 - 1:200
IHC-P	1:500 - 1:2000
ELISA	Recommended starting concentration is 1 µg/mL. Please optimize the concentration based on your specific assay requirements.

Contact

☎ | 400-999-6126

✉ | cn.market@abclonal.com.cn

🌐 | www.abclonal.com.cn

Immunogen Information

Gene ID

4780

Swiss Prot

Q16236

Immunogen

Synthetic peptide. This information is considered to be commercially sensitive.

Synonyms

NRF2; HEBP1; Nrf-2; IMDDHH

Product Information

Source

Rabbit

Isotype

IgG

Purification

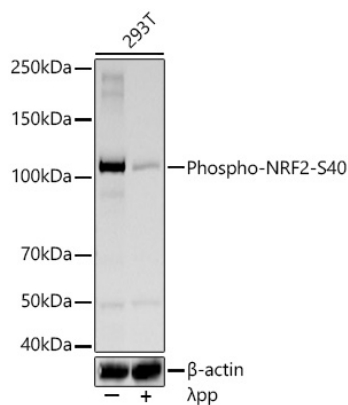
Affinity purification

Storage

Store at -20°C. Avoid freeze / thaw cycles.

Buffer: PBS containing 50% glycerol and 0.05% BSA, preserved with proclin300 or sodium azide (as specified on the Certificate of Analysis), pH 7.3.

Validation Data



Western blot analysis of lysates from 293T cells using Phospho-NRF2-S40 Rabbit mAb (AP1498) at 1:10000 dilution incubated overnight at 4°C. 293T cells were treated by λ-PP mixed solution at 30°C for 1 hours.

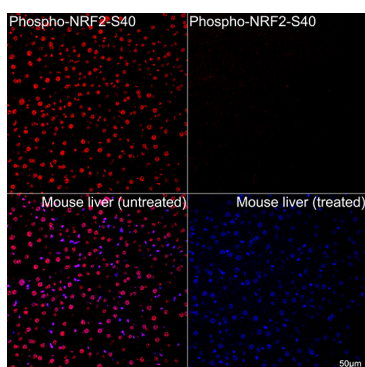
Secondary antibody: HRP-conjugated Goat anti-Rabbit IgG (H+L) (AS014) at 1:10000 dilution.

Lysates/proteins: 30 µg per lane.

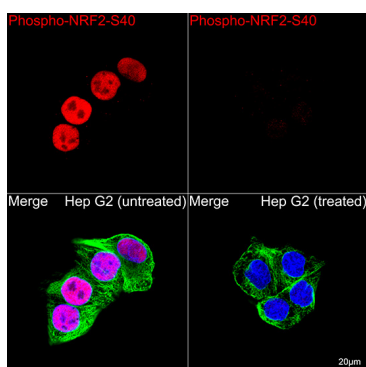
Blocking buffer: 3 % nonfat dry milk in TBST.

Detection: ECL Basic Kit (RM00020).

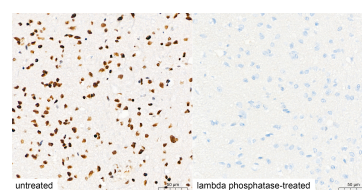
Exposure time: 30s.



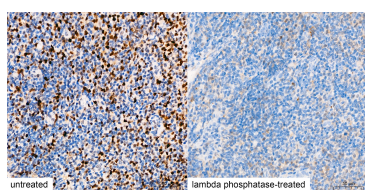
Confocal imaging of paraffin-embedded Mouse liver (treated with λpp) and Mouse liver (untreated) tissue using Phospho-NRF2-S40 Rabbit mAb (AP1498, dilution 1:100) followed by a further incubation with Cy3 Goat Anti-Rabbit IgG (H+L) (AS007, dilution 1:500) (Red). DAPI was used for nuclear staining (Blue). High pressure antigen retrieval performed with 0.01M Citrate Buffer(pH 6.0) prior to IF staining. Objective: 40x.



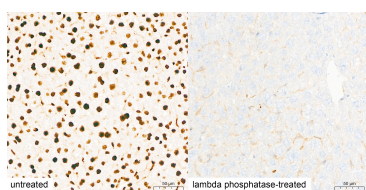
Confocal imaging of Hep G2 cells (treated with λPP) and Hep G2 cells (untreated) using Phospho-NRF2-S40 Rabbit mAb (AP1498, dilution 1:100) followed by a further incubation with Cy3 Goat Anti-Rabbit IgG (H+L) (AS007, dilution 1:500) (Red). The cells were counterstained with α-Tubulin Mouse mAb (AC012, dilution 1:400) followed by incubation with ABflo® 488-conjugated Goat Anti-Mouse IgG (H+L) Ab (AS076, dilution 1:500) (Green). DAPI was used for nuclear staining (Blue). Objective: 100x.



Immunohistochemistry analysis of paraffin-embedded Rat brain tissue, Untreated (left) and lambda phosphatase-treated (right), using Phospho-NRF2-S40 Rabbit mAb (AP1498) at a dilution of 1:1600 (40x lens). High pressure antigen retrieval performed with 0.01M Tris-EDTA Buffer(pH 9.0) prior to IHC staining.



Immunohistochemistry analysis of paraffin-embedded Human tonsil tissue, Untreated (left) and lambda phosphatase-treated (right), using Phospho-NRF2-S40 Rabbit mAb (AP1498) at a dilution of 1:1600 (40x lens). High pressure antigen retrieval performed with 0.01M Tris-EDTA Buffer(pH 9.0) prior to IHC staining.



Immunohistochemistry analysis of paraffin-embedded Mouse liver tissue, Untreated (left) and lambda phosphatase-treated (right), using Phospho-NRF2-S40 Rabbit mAb (AP1498) at a dilution of 1:1600 (40x lens). High pressure antigen retrieval performed with 0.01M Tris-EDTA Buffer(pH 9.0) prior to IHC staining.