

Pan Phospho-T Rabbit pAb

Catalog No.: AP1513

Basic Information

Observed MW

10-250kDa/>10kDa

Calculated MW

Category

Primary antibody

Applications

WB

Cross-Reactivity

Human, Mouse, Other (Wide Range Predicted)

Background

Recommended Dilutions

WB 1:500 - 1:1000

Immunogen Information

Gene ID

Swiss Prot

Immunogen

A synthetic peptide corresponding to a sequence containing phosphorylated S & T.

Synonyms

Contact

☎ | 400-999-6126

✉ | cn.market@abclonal.com.cn

🌐 | www.abclonal.com.cn

Product Information

Source

Rabbit

Isotype

IgG

Purification

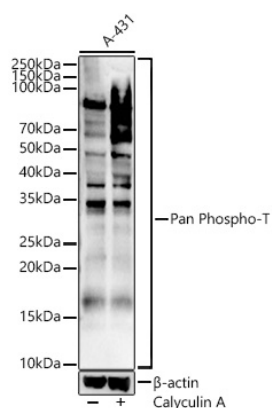
Affinity purification

Storage

Store at -20°C. Avoid freeze / thaw cycles.

Buffer: PBS with 0.05% proclin300,50% glycerol,pH7.3.

Validation Data



Western blot analysis of lysates from A-431 cells using Pan Phospho-T Rabbit pAb (AP1513) at 1:900 dilution. A-431 cells were treated by Calyculin A (50 nM) at 37°C for 30 minutes after serum-starvation overnight.

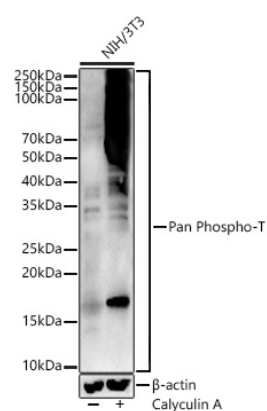
Secondary antibody: HRP Goat Anti-Rabbit IgG (H+L) (AS014) at 1:10000 dilution.

Lysates/proteins: 25 µg per lane.

Blocking buffer: 3% nonfat dry milk in TBST.

Detection: ECL Basic Kit (RM00020).

Exposure time: 180s.



Western blot analysis of lysates from NIH/3T3 cells using Pan Phospho-T Rabbit pAb (AP1513) at 1:900 dilution. NIH/3T3 cells were treated by Calyculin A (100 nM) at 37°C for 30 minutes after serum-starvation overnight.

Secondary antibody: HRP Goat Anti-Rabbit IgG (H+L) (AS014) at 1:10000 dilution.

Lysates/proteins: 25 µg per lane.

Blocking buffer: 3% nonfat dry milk in TBST.

Detection: ECL Basic Kit (RM00020).

Exposure time: 180s.