

Phospho-SMAD1-S463/S465+SMAD5-S463/S465+SMAD9-S465/S467 Rabbit mAb

Catalog No.: AP1518 **Recombinant**

Basic Information

Observed MW

60kDa

Calculated MW

52kDa

Category

Primary antibody

Applications

ELISA, WB, IHC-P

Cross-Reactivity

Human, Mouse, Rat

CloneNo number

ARC59007

Background

The protein encoded by this gene is involved in the transforming growth factor beta signaling pathway that results in an inhibition of the proliferation of hematopoietic progenitor cells. The encoded protein is activated by bone morphogenetic proteins type 1 receptor kinase, and may be involved in cancer. Alternative splicing results in multiple transcript variants.

Recommended Dilutions

WB	1:500 - 1:1000
IHC-P	1:50 - 1:200

Immunogen Information

Gene ID

4086/4090/4093

Swiss Prot

Q15797/Q99717/O15198

Immunogen

A synthetic phosphorylated peptide around S463/S465//S467 of human SMAD1/SMAD5/SMAD9.

Synonyms

BSP1; MADH1; MADR1; JV4-1; DWFC; JV5-1; MADH5; MADH6; MADH9; SMAD8; Phospho-SMAD1-S463/S465+SMAD5-S463/S465+SMAD9-S465/S467

Contact

☎ | 400-999-6126

✉ | cn.market@abclonal.com.cn

🌐 | www.abclonal.com.cn

Product Information

Source

Rabbit

Isotype

IgG

Purification

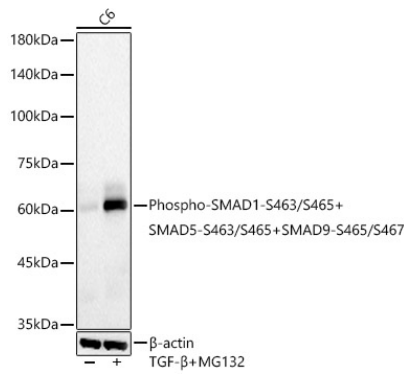
Affinity purification

Storage

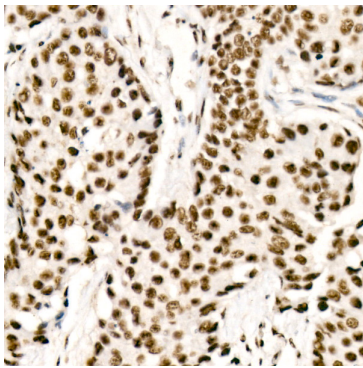
Store at -20°C. Avoid freeze / thaw cycles.

Buffer: PBS with 0.05% proclin300, 0.05% BSA, 50% glycerol, pH7.3.

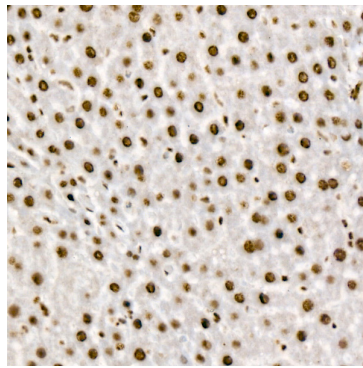
Validation Data



Western blot analysis of lysates from C6 cells using Phospho-SMAD1-S463/S465+SMAD5-S463/S465+SMAD9-S465/S467 Rabbit mAb (AP1518) at 1:1000 dilution. C6 cells were treated by TGF beta 3 (10ng/ml) and MG132 (2 μ M) at 37°C for 20 minutes.
Secondary antibody: HRP Goat Anti-Rabbit IgG (H+L) (AS014) at 1:10000 dilution.
Lysates/proteins: 25 μ g per lane.
Blocking buffer: 3% nonfat dry milk in TBST.
Detection: ECL Basic Kit (RM00020).
Exposure time: 30s.



Immunohistochemistry analysis of paraffin-embedded Human lung cancer tissue using Phospho-SMAD1-S463/S465+SMAD5-S463/S465+SMAD9-S465/S467 Rabbit mAb (AP1518) at a dilution of 1:200 (40x lens). High pressure antigen retrieval performed with 0.01M Citrate Buffer (pH 6.0) prior to IHC staining.



Immunohistochemistry analysis of paraffin-embedded Rat liver tissue using Phospho-SMAD1-S463/S465+SMAD5-S463/S465+SMAD9-S465/S467 Rabbit mAb (AP1518) at a dilution of 1:200 (40x lens). High pressure antigen retrieval performed with 0.01M Citrate Buffer (pH 6.0) prior to IHC staining.