

Phospho-PLC gamma 2 (PLCG2)-Y759 Rabbit mAb

Catalog No.: AP1519 **Recombinant**

Basic Information

Observed MW

150kDa

Calculated MW

148kDa

Category

Primary antibody

Applications

ELISA, WB, IF/ICC

Cross-Reactivity

Human

CloneNo number

ARC65157

Background

The protein encoded by this gene is a transmembrane signaling enzyme that catalyzes the conversion of 1-phosphatidyl-1D-myo-inositol 4,5-bisphosphate to 1D-myo-inositol 1,4,5-trisphosphate (IP3) and diacylglycerol (DAG) using calcium as a cofactor. IP3 and DAG are second messenger molecules important for transmitting signals from growth factor receptors and immune system receptors across the cell membrane. Mutations in this gene have been found in autoinflammation, antibody deficiency, and immune dysregulation syndrome and familial cold autoinflammatory syndrome 3.

Recommended Dilutions

WB 1:2000 - 1:6000**IF/ICC** 1:50 - 1:200

Immunogen Information

Gene ID

5336

Swiss Prot

P16885

Immunogen

A synthetic phosphorylated peptide around Y759 of human PLC gamma 2 (PLCG2) (NP_002652.2).

Synonyms

FCAS3; APLAID; PLC-IV; PLC-gamma-2; Phospho-PLC gamma 2 (PLCG2)-Y759

Contact

 | 400-999-6126 | cn.market@abclonal.com.cn | www.abclonal.com.cn

Product Information

Source

Rabbit

Isotype

IgG

Purification

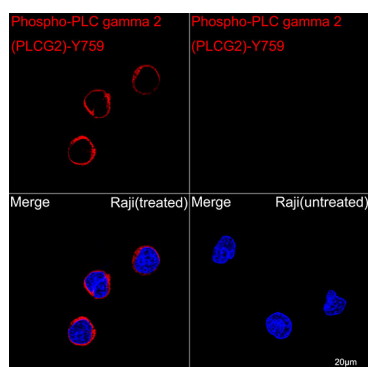
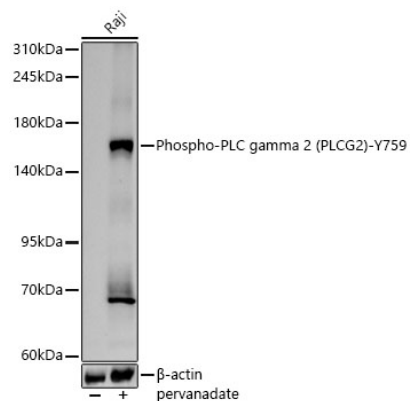
Affinity purification

Storage

Store at -20°C. Avoid freeze / thaw cycles.

Buffer: PBS with 0.05% proclin300, 0.05% BSA, 50% glycerol, pH7.3.

Validation Data



Confocal imaging of Raji cells (treated with pervanadate) and Raji cells (untreated) using Phospho-PLC gamma 2 (PLCG2)-Y759 Rabbit mAb (AP1519, dilution 1:200) followed by a further incubation with Cy3 Goat Anti-Rabbit IgG (H+L) (AS007, dilution 1:500) (Red). DAPI was used for nuclear staining (Blue). Objective: 100x.