

Phospho-STAT2-Y690 Rabbit mAb

Catalog No.: AP1522 **Recombinant**

Basic Information

Observed MW

97kDa,113kDa

Calculated MW

98kDa

Category

Primary antibody

Applications

WB,ELISA

Cross-Reactivity

Human, Rat

CloneNo number

ARC66866

Background

The protein encoded by this gene is a member of the STAT protein family. In response to cytokines and growth factors, STAT family members are phosphorylated by the receptor associated kinases, and then form homo- or heterodimers that translocate to the cell nucleus where they act as transcription activators. In response to interferon (IFN), this protein forms a complex with STAT1 and IFN regulatory factor family protein p48 (ISGF3G), in which this protein acts as a transactivator, but lacks the ability to bind DNA directly. The protein mediates innate antiviral activity. Mutations in this gene result in Immunodeficiency 44.

Recommended Dilutions

WB 1:500 - 1:1000**ELISA** Recommended starting concentration is 1 µg/mL. Please optimize the concentration based on your specific assay requirements.

Immunogen Information

Gene ID

6773

Swiss Prot

P52630

Immunogen

Synthetic peptide. This information is considered to be commercially sensitive.

Synonyms

P113; IMD44; ISGF-3; PTORCH3; STAT113

Contact

 | 400-999-6126 | cn.market@abclonal.com.cn | www.abclonal.com.cn

Product Information

Source

Rabbit

Isotype

IgG

Purification

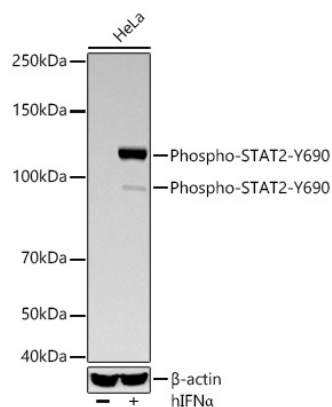
Affinity purification

Storage

Store at -20°C. Avoid freeze / thaw cycles.

Buffer: PBS with 0.09% Sodium azide,0.05% BSA,50% glycerol,pH7.3

Validation Data



Western blot analysis of lysates from HeLa cells using Phospho-STAT2-Y690 Rabbit mAb (AP1522) at 1:1000 dilution incubated overnight at 4°C. HeLa cells were treated with hIFN α (10 ng/ml) at 37°C for 30 minutes after serum-starvation overnight.
Secondary antibody: HRP-conjugated Goat anti-Rabbit IgG (H+L) (AS014) at 1:10000 dilution.
Lysates/proteins: 30 μ g per lane.
Blocking buffer: 3 % nonfat dry milk in TBST.
Detection: ECL Basic Kit (RM00020).
Exposure time: 180s.