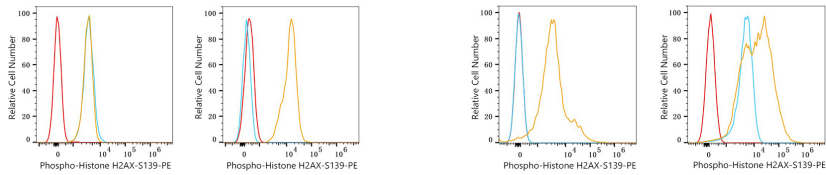


Validation Data



Flow cytometry: 1×10^6 HeLa cells (negative control, left) and HeLa cells (treated with UV for 30min, right) were intracellularly-stained with PE Rabbit anti-Human Phospho-Histone H2AX-S139 mAb (AP1529, 5 μ l/Test, orange line) or PE Rabbit IgG isotype control (A24172, 5 μ l/Test, blue line). Non-fluorescently stained cells were used as blank control (red line).

Flow cytometry: 1×10^6 NIH/3T3 cells (negative control, left) and NIH/3T3 cells (treated with UV for 30min, right) were intracellularly-stained with PE Rabbit anti-Human Phospho-Histone H2AX-S139 mAb (AP1529, 5 μ l/Test, orange line) or PE Rabbit IgG isotype control (A24172, 5 μ l/Test, blue line). Non-fluorescently stained cells were used as blank control (red line).